



CAPITAL REGION  
CLIMATE READINESS  
COLLABORATIVE

# Quarterly Workshop

*Breaking Down Silos:  
Emergency Preparedness  
& Climate Action Planning*

**June 24, 2025  
12:30 - 3:30 PM**





# *Host Welcome*

---



*Freeze Singh, President*

***Thank you to CRC member, the Sacramento  
Association of Realtors for hosting us!***



*Hope you all enjoy the fresh produce from Cloverleaf Farm!*





# What is the Capital Region Climate Readiness Collaborative?

The Capital Region Climate Readiness Collaborative (CRC) is a network designed to promote greater resilience through coordination across the six-county Capital Region.

The purpose is to provide a forum for regional engagement for leaders from public agencies, business, nonprofit, academia, community groups, and other partners.

Through CRC-led initiatives, partners convene across market and jurisdictional boundaries to:

- share information and best practices
- leverage efforts and resources
- avoid duplication of efforts
- identify critical needs and funding opportunities



CAPITAL REGION  
CLIMATE READINESS  
COLLABORATIVE

## Members of the Capital Region Climate Readiness Collaborative





# Agenda

- 1:00 Welcoming Remarks**
- 1:10 New Member Presentation**
- 1:25 Making the Case: Integrating Climate Planning and Emergency Response**
- 1:45 Break**
- 1:55 Innovative Models for Planning and Resilience  
Closing Remarks & Next Steps**
- 2:35 Case Study: Delta Region Geologic Hazard Abatement District**
- 3:15 Final Q/A**
- 3:30 Adjourn**





# New Member Presentation

---



**Morgan Brown, Executive Director  
Color the Block!**



# COLOR THE BLOCK



Color  
THE  
BLOCK

**Planting Roots  
Empowering Youth  
Cultivating Change**

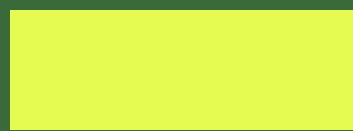




# Who Are We

**MISSION:** TO EMPOWER YOUTH AND FAMILIES IN UNDERREPRESENTED COMMUNITIES THROUGH CULTURALLY RELEVANT ART, ENVIRONMENTAL JUSTICE, AND EDUCATION.

**VISION:** THRIVING NEIGHBORHOODS WHERE CREATIVITY, EQUITY, AND SUSTAINABILITY SHAPE THE FUTURE.





# FOCUS POINTS O

## NETWORK

Establish a network of Youthful connections and foster Social Consciousness

## ENTREPRENEURSHIP

Educate youth in purpose driven entrepreneurial skills and economic development

## ENGAGEMENT

Boost involvement of youth in the community and promote civic leadership

## EMPOWERMENT

Provide youth with the tools and opportunities to exercise their rights





FROM SOIL TO SOUL:

LET KIDS CONNECT WITH NATURE





# WHO NEEDS US

INCLUSIVITY  
EQUITY  
ACCESSIBILITY

1

Underrepresented and  
Underserved Communities  
Veterans and Seniors

2

“Troubled” Youth and Foster  
Children  
BIPOC and Minority Populations

3

4

Unhoused Individuals and Families

5

6

ALL Individuals w/ Disabilities



# Current Programs



- **Cigarette Litter Prevention Program**
- **Teen Paint Parties**
- **Wellness Walks**
- **Paint and Create Parties**
- **Little Sprouts Garden Club**
- **Explore The Coast**
- **Teen Harvest Heroes**
- **Learn With Literacy**
- **Excelsior Market**
- **Black Innovators Program**
- **Legacy 100**



# Goals

## CULTIVATE UNITY:

Foster a sense of community by bringing together residents from Sacramento to collaborate on garden projects, workshops, and events that promote social cohesion and cultural inclusivity

## PROMOTE SUSTAINABILITY

Educate community members about sustainable gardening practices, eco-conscious living, and environmental stewardship, contributing to a more sustainable and resilient community

## PROVIDE ACCESS TO HEALTHY FOOD

Ensure that our community has access to fresh, healthy, and locally grown produce, addressing food security and improving overall nutrition

## ENGAGE IN EDUCATION

Offer workshops, educational programs, and youth initiatives that empower individuals with practical skills and knowledge related to gardening, art, and sustainable living

## EMPOWER THROUGH ART

Utilize the garden as a canvas for artistic expression, encouraging creativity, art appreciation, and cultural diversity

## CULTIVATE A SUSTAINABLE FUTURE

Cultivate a strong sense of responsibility for the environment and inspire a commitment to sustainable practices among community members, nurturing a brighter and greener future for Central and South Sacramento





“When culture is reflected in the classroom, the garden, and the art, our youth don’t just learn — they recognize themselves in the lesson. Cultural relevancy isn’t a strategy; it’s a necessity for true empowerment.”





# Our Community Garden Initiative

Our garden spaces are designed to welcome everyone — regardless of financial status, prior gardening knowledge, or educational background. We believe every community member deserves access to a space that fosters wellness, encourages a love for nature, and nurtures sustainable living. These gardens are not just about growing food; they're about growing community, resilience, and a deeper connection to the earth.





# Impact By Numbers

Since our inception in 2023:

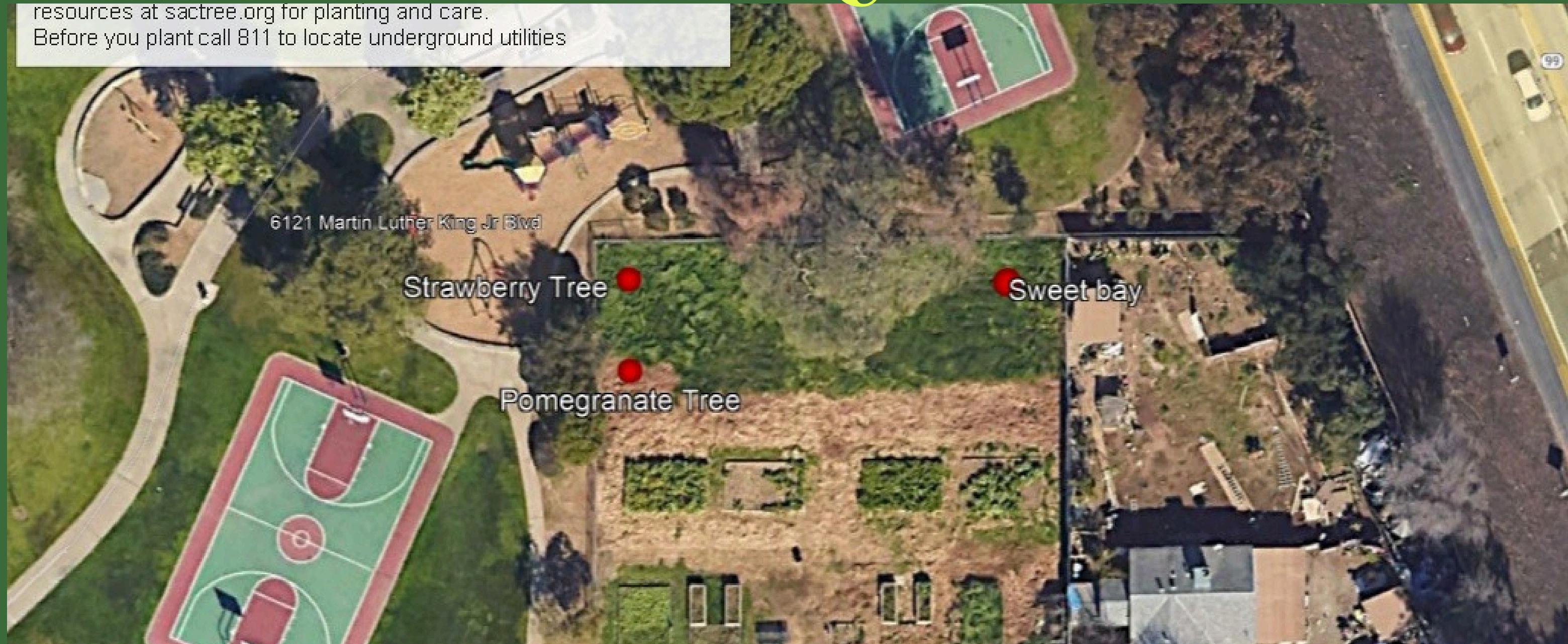
- 2 community gardens maintained
- 7 Current Gardens in Pre-Build Out Status
- 20+ annual community events
- 100+ youth over 12 Years Old served annually
- 1500+ families reached through education, giveaways, and outreach
- 20+ active partnerships with schools, nonprofits, and local agencies





# Rainbow Mini Park Community Garden

resources at [sactree.org](http://sactree.org) for planting and care.  
Before you plant call 811 to locate underground utilities



## 6121 Martin Luther King Jr Blvd





# Black Innovators Program

THE BLACK INVENTORS PROGRAM EXISTS TO UNCOVER AND CELEBRATE THE STORIES OF BLACK INVENTORS AND INNOVATORS WHOSE CONTRIBUTIONS HAVE BEEN HISTORICALLY OVERLOOKED OR MINIMIZED. BY BRINGING THESE POWERFUL LEGACIES TO LIGHT, WE EMPOWER YOUTH OF ALL BACKGROUNDS TO SEE THEMSELVES AS PROBLEM-SOLVERS, CREATORS, AND CHANGEMAKERS. THIS PROGRAM FOSTERS CULTURAL PRIDE AND CROSS-CULTURAL EDUCATION, REINFORCING THAT INNOVATION KNOWS NO BOUNDARIES AND THAT INSPIRATION CAN BE FOUND IN EVERY STORY.





History — Uncovering untold stories that inspire and educate across generations.

Heritage — Honoring the legacy and contributions of Black inventors throughout history.



Hope — Inspiring belief in what's possible through representation and innovation.



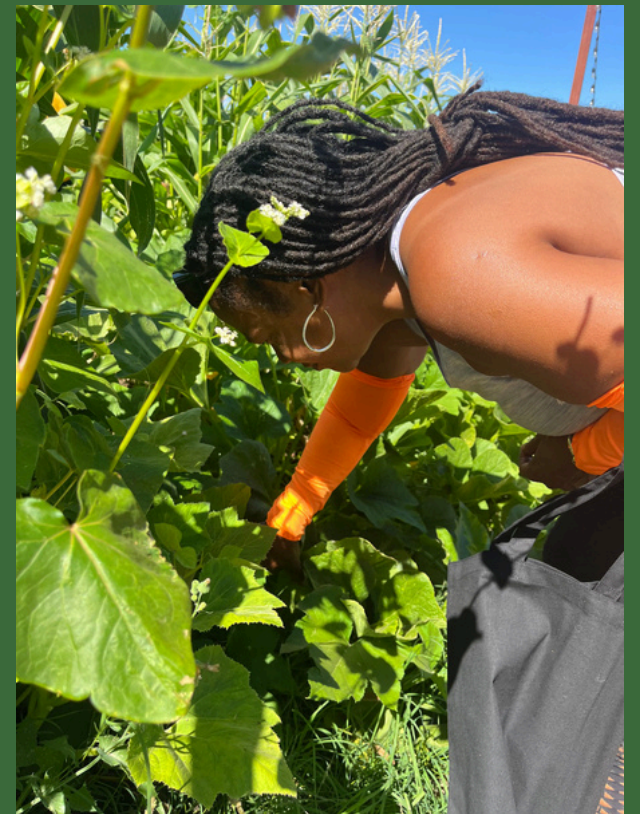












# ESTATE FARMS FLORIN/VINEYARD AREA













# Contact Us

**INFO@COLORTHEBLOCK.ORG**

**916-527-4282**

**WWW.COLORTHEBLOCK.ORG**

**FOLLOW US ON FACEBOOK**

**@COLORTHEBLOCK**



# New Member Presentation

---



**Deb Banks, Executive Director  
Sacramento Area Bicycle Advocates (SABA)**



SABA works to make the Sacramento Region a safe, enjoyable place for all ages to ride their bicycles for daily transportation.

Through advocacy, encouragement, education and community service, we're making the Sacramento region safer, more environmentally friendly and fun!

- SABA is over 30 years old.
- Powered by a 17 person Board of Directors.
- Our Staff of 30 is scrappy. "We punch above our weight!"
- We have over 100 volunteers who help us serve the community.



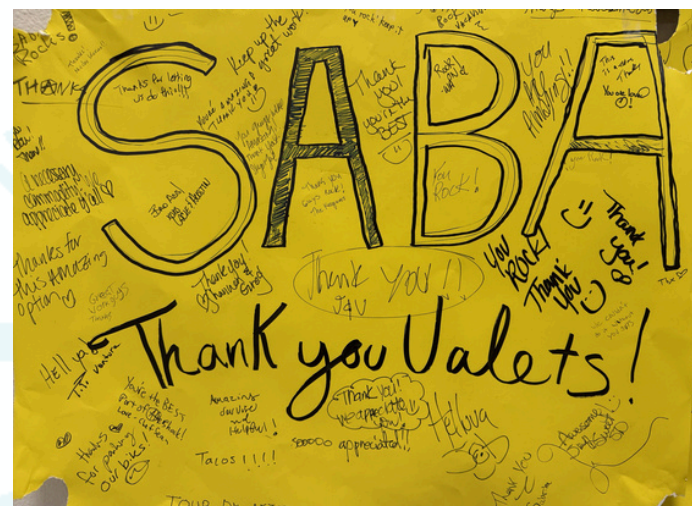




In partnership with Community Shop Class, we are opening Community Bike Shop on Stockton Blvd. in **July 2025**



In 2024 SABA's bike mechanics have repaired over **2000 bikes** at 100 events + **1000 bikes** donated and UPcycled

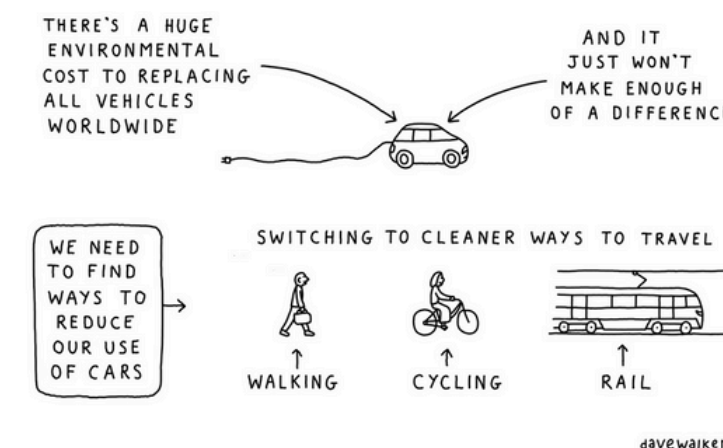


**7000** bikes parked at 200 events



**325** E-bike test rides  
**200** on our e-bike listserv  
**35** e-bike vouchers claimed

ELECTRIC CARS  
DON'T SOLVE  
THE PROBLEM  
OF CARBON EMISSIONS FROM TRANSPORT



**750 lbs** of food gathered by bike for the River City Food Bank

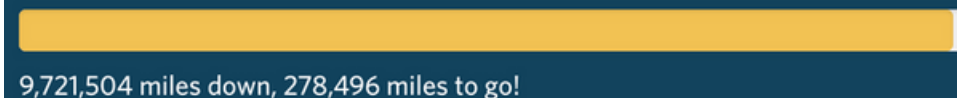


May is **BIKE MONTH**



Help us reach 10 million miles!

We believe that every month is bike month, so let's keep rolling. Our goal is to reach 10 million miles by the end of the year. Help us get it done & all you need to do is ride your bike and log your ride



SAC REGION ALL TIME STATS	
	<b>607</b> WORKPLACES
	<b>12,548</b> PEOPLE
	<b>3,027</b> NEW RIDERS
	<b>9,727,070</b> MILES
	<b>640,841</b> RIDES
	<b>726,260</b> LB CO2



# Integrating Climate Planning and Emergency Response

---



**Kristen Wraithwall**  
**Sustainability Manager**



# Connecting Climate Action and Emergency Preparedness in Yolo County

## A Collaborative Approach to Building Community Resilience

**June 24, 2025**

Kristen Wraithwall  
Yolo County Sustainability Manager





# Presentation Outline



- **Yolo County Climate Action and Adaptation Plan (CAAP)**
  - oCAAP Strategy Framework



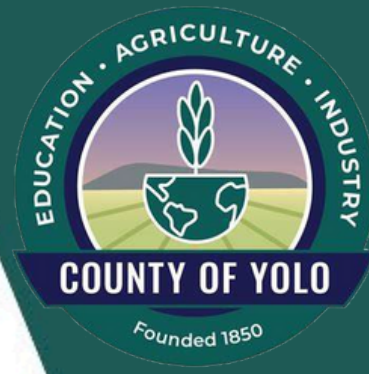
- **CAAP vs. LHMP**



- **CAAP Actions Supporting Emergency Preparedness**



- **Coordinated Planning | Lessons Learned**





# WHAT IS YOLO COUNTY'S CLIMATE ACTION & ADAPTATION PLAN (CAAP)?

In 2020, the Yolo County Board of Supervisors set the goal of meeting a carbon-negative footprint by 2030 with a focus on equity and justice. The Climate Action and Adaptation Plan (CAAP) is a roadmap that outlines the actions that Yolo County will take to meet these greenhouse gas (GHG) emissions reduction goals and help our community be more resilient to climate impacts such as higher temperatures, more frequent wildfires and floods, and drought.

Driven by public input, the CAAP will include recommendations for how we can lower emissions, protect our natural resources, use more renewable energy, support the sustainable agricultural practices that are already thriving here in Yolo County, and more. The CAAP is designed to benefit all community members and to promote health, equity, and resilience in all processes and outcomes.

## WHAT IS A CARBON-NEGATIVE FOOTPRINT?

This means that Yolo County will remove more carbon from the atmosphere than we produce. We will do this by reducing our emissions, while also supporting practices that increase the amount of carbon stored in our soils.

## WHAT IS A JUST TRANSITION?

Meeting our climate goals will require some big changes or “transitions” in our energy use, transportation system, and more. Yolo County wants to make sure that this transition is equitable and “just”, and that vulnerable communities and those most impacted by climate change are not only protected, but also play a central role in the decision making process. Ensuring a Just Transition is a key focus point for the CAAP.

**QUESTIONS OR WANT TO LEARN MORE?**

Email [Sustainability@yolocounty.org](mailto:Sustainability@yolocounty.org) or visit [www.YoloCAAP.org](http://www.YoloCAAP.org) to get involved!

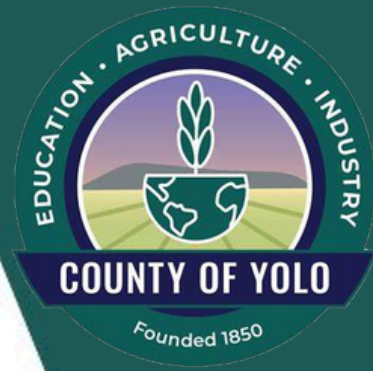


## CLIMATE MITIGATION

## Eliminate and sequester Emissions

## CLIMATE ADAPTATION

### Safeguard for current and future Hazards

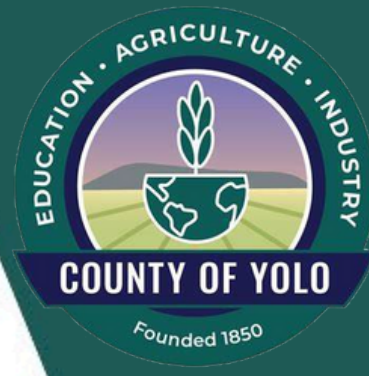


## CLIMATE ACTION & ADAPTATION PLAN





# Tiered Implementation Framework

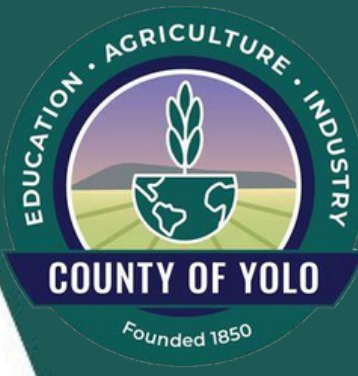


Strategy	
Strategy 1	Decarbonize Transportation
Strategy 2	Reduce Vehicle Miles Traveled
Strategy 3	Decarbonize Energy and Buildings and Increase Energy Efficiency
Strategy 4	Optimize Water Use
Strategy 5	Minimize Waste
Strategy 6	Reduce Off-Road Equipment Emissions
Strategy 7	Support Climate-Smart Agriculture
Strategy 8	Sequester and Store Carbon in Natural and Working Lands
Strategy 9	Reduce Carbon Footprint of Consumption and Production
Strategy 10	Build Resilient Infrastructure and Healthy Communities





# Tiered Implementation Framework



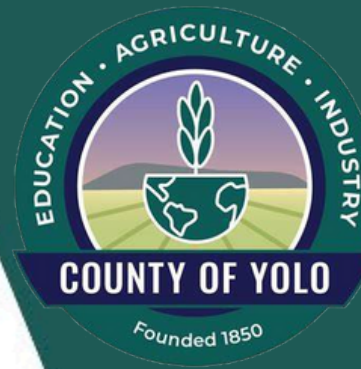
Strategy	
Strategy 1	Decarbonize Transportation
Strategy 2	Reduce Vehicle Miles Traveled
Strategy 3	Decarbonize Energy and Buildings and Increase Energy Efficiency
Strategy 4	Optimize Water Use
Strategy 5	Minimize Waste
Strategy 6	Reduce Off-Road Equipment Emissions
Strategy 7	Support Climate-Smart Agriculture
Strategy 8	Sequester and Store Carbon in Natural and Working Lands
Strategy 9	Reduce Carbon Footprint of Consumption and Production
Strategy 10	Build Resilient Infrastructure and Healthy Communities



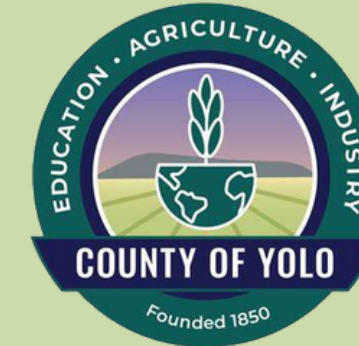


# LHMP

# CAAP



**Lead Agency**



**Hazards of Concern**

Non-Climate Hazards  
*Levee/Dam Failure, High Wind, Earthquake, Subsidence, Fog*

Climate-Related Natural Hazards

*Wildfire, Extreme*

*Heat, Flooding, Drought*

Climate Change  
*Seasonal Shifts, Social/Equity Impacts*

**Response Types**

Structural projects, preparedness & response, Reduce immediate and repeat disaster risks

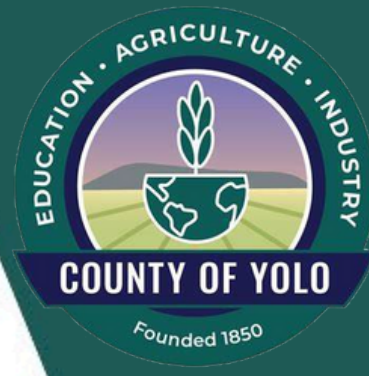
local plans + regulations

Capacity-building  
Reduce GHG Emissions + increase long-term resilience





# Yolo County's Coordinated Planning Framework



## **The CAAP complements existing County plans:**

- General Plan
- Farmworker Health Assessment
- Multi-Jurisdictional Hazard Mitigation Plan (HMP)

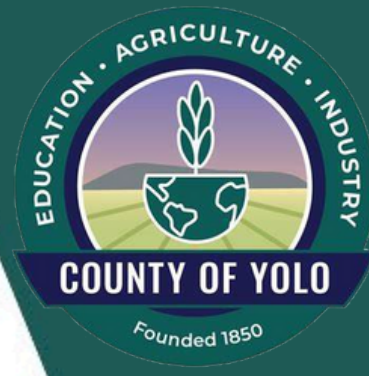
## **These plans work together to:**

- Reduce long-term risks.
- Share data and background research.
- Reinforce and align policy goals.
- Coordinate implementation strategies.





# CAAP Actions Supporting Emergency Preparedness



**The CAAP includes more than a dozen actions—*specifically under the Healthy Communities (HC) strategy*—co-managed by the Office of Emergency Services:**

- HC 1: Create and support a network of **Community Resilience Centers**
- HC 3: **Prepare Vulnerable Communities** through education, shelters, and outreach
- HC 4d: Partner on **evacuation plans** for residents with mobility needs
- HC 5f: Upgrade **critical facilities** for climate resilience





# Highlights | HCN: Resilience Center Network

## Cooling Centers (OES-led) | Short-Term Safety Net

- Activated **only during extreme heat events** based on weather thresholds.
- Provide **basic emergency relief**: air conditioning, seating, water access.
- Intended for **short-term use** during a specific hazardous condition.
- Often located in existing public buildings like libraries or senior centers.
- Operated primarily by **Office of Emergency Services (OES)** during emergencies.



## Resilience Centers (Sustainability-led) | Long-Term Community Infrastructure

- **Year-round community hubs** that also serve as Cooling Centers during emergencies.
- Include **wrap-around services**: clean air, backup power, food distribution, charging stations, climate education, and more.
- Designed to support **ongoing community resilience**, not just short-term response.
- Targeted investments in **climate-vulnerable communities**.
- Led by the **Sustainability Division** in coordination with community partners.





# Yolo County's HMP /CAAP Lessons Learned



## •**Build and Maintain Interdepartmental Relationships**

- Work across agencies—especially emergency services, planning, health, and public works—to align priorities and resources.
- “Green Teams” or resilience committees can be effective coordination platforms.



## •**Parallel Planning Is More Efficient:**

- Consider doing plan updates at the same time to reduce duplication and strengthens outcomes.
- Co-facilitate outreach events.

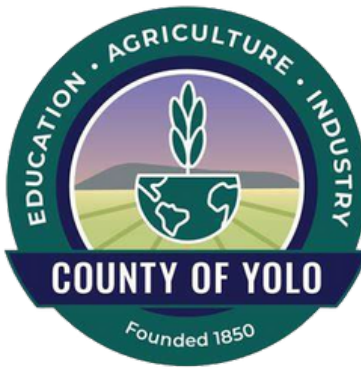
## •**Use Community Engagement to Strengthen Risk Identification**

- Community meetings helped reveal overlooked hazards (e.g., air quality, heat) and helped us co-develop locally supported solutions.





# Yolo County's HMP /CAAP Lessons Learned Cont.



- **Shared Terminology Matters:**

- Differences in terms (*e.g.*, “*risk*” vs. “*vulnerability*”) can confuse collaboration.
- Align definitions across departments early.



- **Choose Climate Scenarios and Timeframes Early**

- Clearly define emissions scenarios (*low/medium/high*), time horizons (*2030, 2050, 2100*), and datasets at the outset.
- Document rationale to build trust and avoid delays during stakeholder engagement.





# Questions?

*Kristen Wraithwall*  
*Sustainability Manager*

kristen.wraithwall@yolocounty.org



**WANT TO STAY ENGAGED AND LEARN MORE?**



Scan for our  
Facebook!



Scan for our  
Instagram!

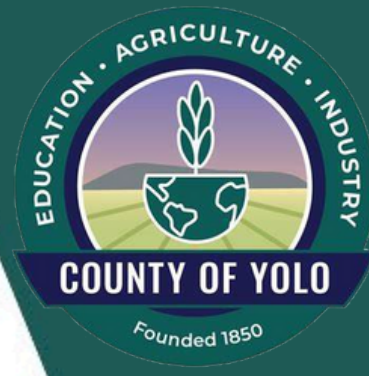


Scan for our  
Website!





# Yolo County's HMP /CAAP Lessons Learned



- **Build and Maintain Interdepartmental Relationships**

- Work across agencies—especially emergency services, planning, health, and public works—to align priorities and resources.
- “Green Teams” or resilience committees can be effective coordination platforms.

- **Use Community Engagement to Strengthen Risk Identification**

- Community meetings helped reveal overlooked hazards (e.g., air quality, heat) and helped us co-develop locally supported solutions.

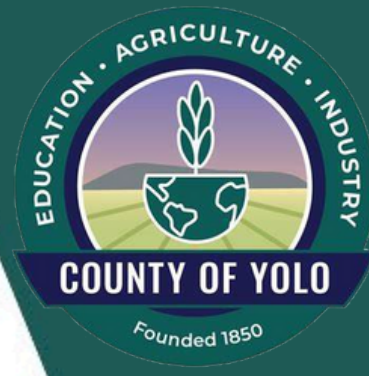
- **Integrate Long-Term Climate Change into Risk Assessments**

- Traditional hazard mitigation uses historical data; adaptation requires future climate projections.
- Collaborate with emergency planners to reconcile these approaches in vulnerability assessments and come to an agreement about data.





# Yolo County's HMP /CAAP Lessons Learned Cont.



- **Shared Terminology Matters:**

- Differences in terms (e.g., “risk” vs. “vulnerability”) can confuse collaboration.
- Align definitions across departments early.

- **Choose Climate Scenarios and Timeframes Early**

- Clearly define emissions scenarios (*low/medium/high*), time horizons (*2030, 2050, 2100*), and datasets at the outset.
- Document rationale to build trust and avoid delays during stakeholder engagement.

- **Parallel Planning Is More Efficient:**

- Instead of creating separate adaptation and hazard mitigation plans, doing them together (if even just at the same time) reduces duplication and strengthens outcomes.
- Co-facilitate outreach events.





**Break (5 min)**

---





# Innovative Models for Planning and Resilience

---



**Angel Green**  
**Sustainability Manager**





# CAPITAL REGION CLIMATE READINESS COLLABORATIVE

## BREAKING DOWN SILOS

### Emergency Preparedness and Evacuation Planning (EPEP) Guidance for Discretionary Projects

*Angel Green, Senior Planner*



# Overview

---

**EPEPs: What are they and why are they important?**

---

**Regulatory Environment & Policy Context**

---

**Hazard & Vulnerability Assessments**

---

**EPEP Guidance & Implementation for New Development Projects**



# What is an EPEP?

An **Emergency Preparedness and Evacuation Plan (EPEP)**, as defined by Placer County, is a site-specific planning document required for **discretionary development** projects located in areas with **elevated hazard risks**—such as wildfire-prone zones, State Responsibility Areas (SRAs), areas within the Wildland-Urban Interface (WUI), flood zones, avalanche zones, or other areas identified as **climate hazard zones**.



# Purpose

## Purpose of an EPEP:

The EPEP is intended to:

- Evaluate **emergency preparedness needs** of a project site
- Identify **evacuation constraints or risks**
- Recommend **measures to enhance public safety** during emergency events
- Ensure that **new development does not compromise evacuation feasibility** or emergency access in surrounding communities



# Why EPEPs Matter

---

Increasing frequency and severity of wildfire and climate-related hazards

---

Geography and vulnerability of Placer County (SRAs, WUI zones, flood zones)

---

Lessons from recent wildfires and evacuation challenges

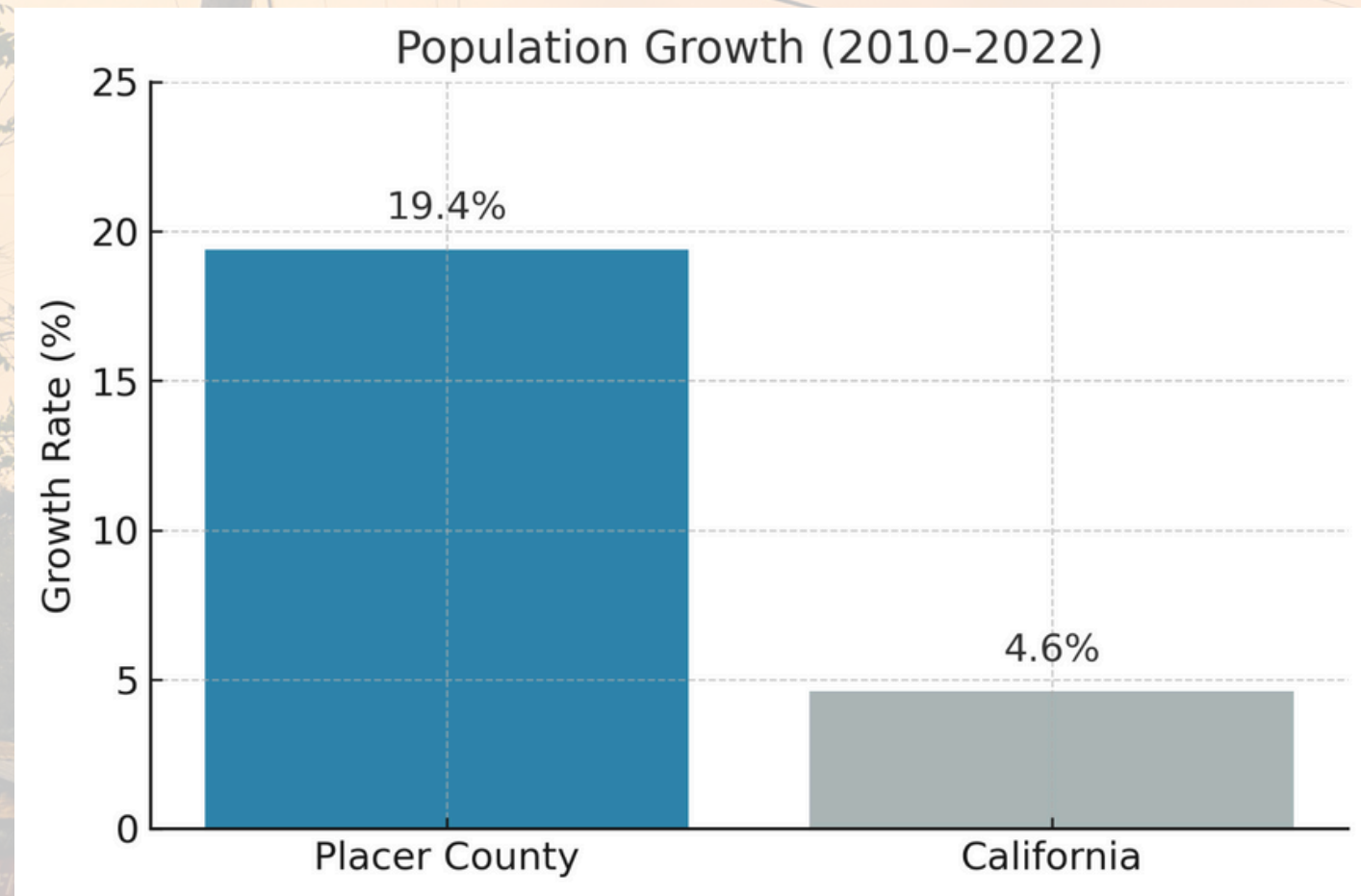
---

Public safety is a planning priority





# Development Pressures & Public Safety Responsibilities



- Placer County continues to experience strong development demand
- Growth in high-risk areas increases evacuation complexity
- County must balance housing and infrastructure needs with public safety
- EPEP ensures safety is prioritized from project review through implementation



# State Laws

---

**SB99:** Requires cities and counties to review and update the Safety Element to identify residential developments located in hazard areas that lack at least two emergency evacuation routes. (January 1, 2020).

---

**AB747:** Requires the safety element to address, among other things, evacuation routes related to identified fire and geologic hazards. (January 1, 2022)

---

**AB1409:** Requires the safety element to be reviewed and updated to identify safe evacuation locations and integrate these into the existing Local Hazard Mitigation Plan (January 1<sup>st</sup>, 2022)

---

**AB1241:** Requires the Safety Element of a General Plan to identify and address evacuation constraints in areas classified as State Responsibility Areas (SRAs) and Very High Fire Hazard Severity Zones (VHFHSZs). (Upon the next revision of the Housing Element on or after January 1, 2024)

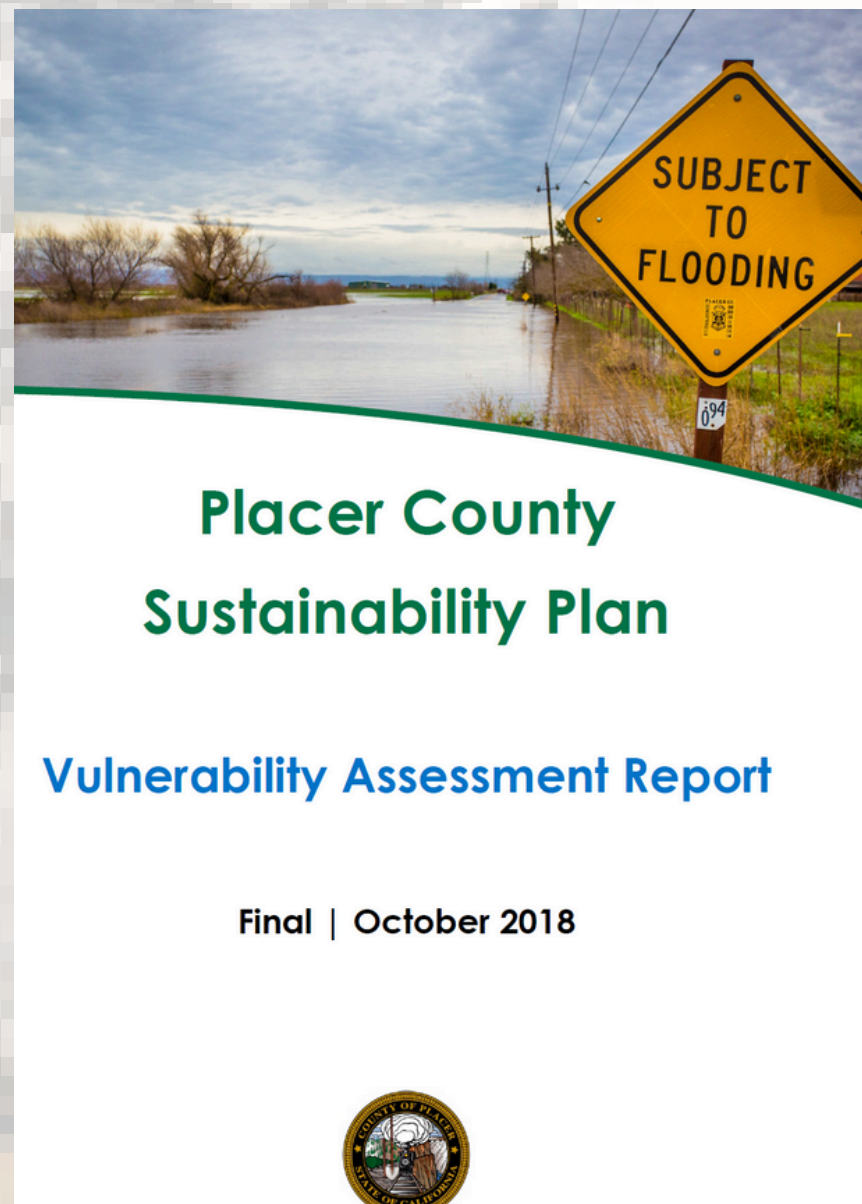
---

**SB379:** Requires California cities and counties to prepare vulnerability studies and to integrate climate adaptation and resilience strategies into their Safety Element. These strategies must be concrete actions, like widening roads, creating fuel breaks, and supporting defensible space (compliance required by January 1<sup>st</sup>, 2022)

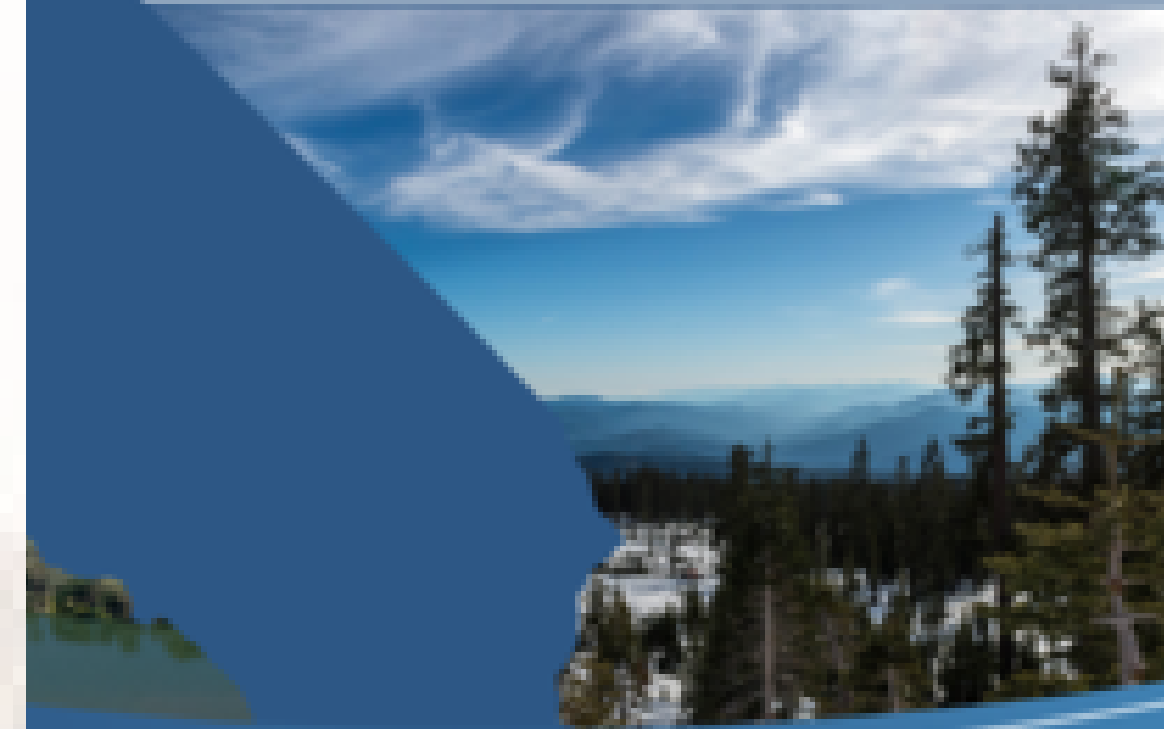


# Placer County Vulnerability Assessment

- Conducted to meet **Senate Bill 379** requirements for climate adaptation and safety planning
- Followed the **California Adaptation Planning Guide (APG)** framework
- Identified climate-related risks and informed **adaptation strategies and policies**



## CALIFORNIA ADAPTATION PLANNING GUIDE







# Placer County Sustainability Plan

## Vulnerability Assessment Report

Final | October 2018



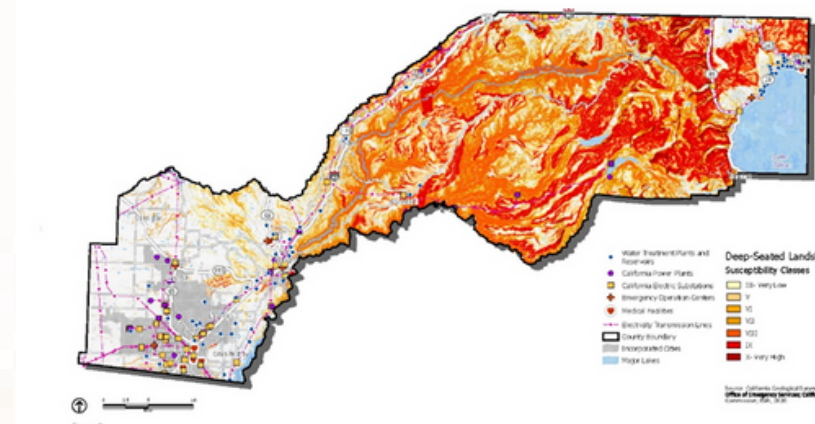
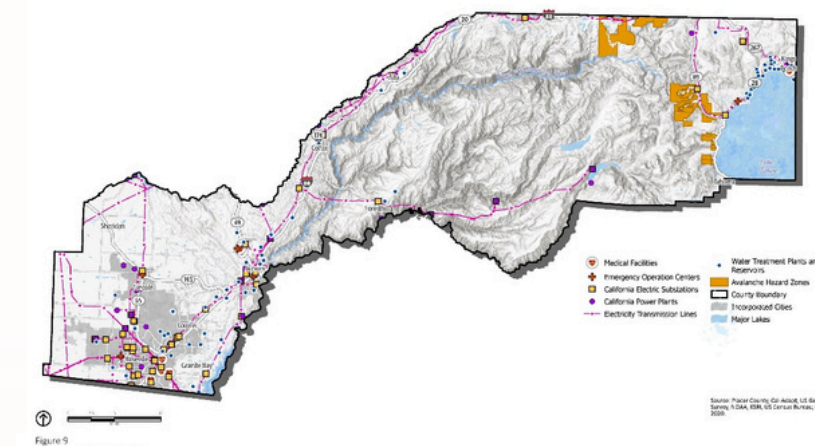
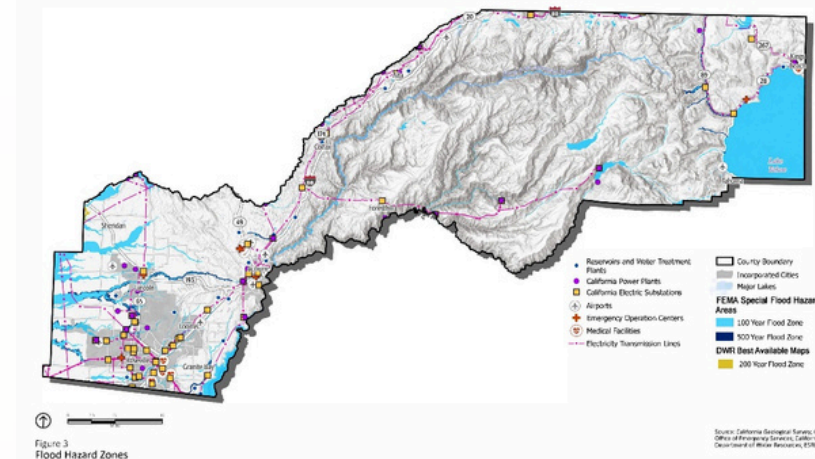
## Hazards

## Extreme Heat

## Risks

## Landslide Risk

## Wildfire Risk





# Health and Safety Element Policies



---

Protect the community from risks associated with a variety of hazards, including seismic activity, landslides, flooding, and wildfire, as required by the California Government Code Section 65302(g)(1)

---

---

Identify residential developments in any hazard area identified that do not have at least two emergency evacuation routes, as required by California Government Code Section 65302(g)(5)

---

---

All new development in SRAs or VHFSZs or WUIs must prepare long-term comprehensive fuel reduction and management program AND multiple points of ingress and egress.

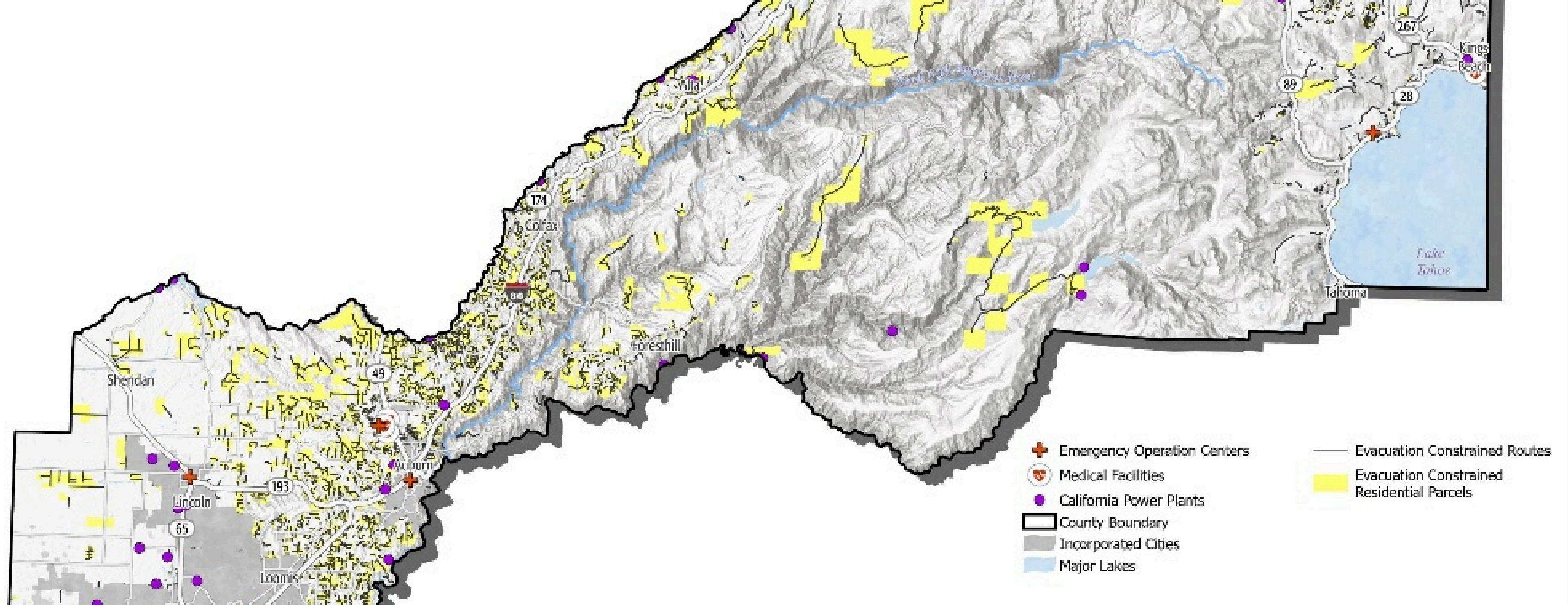
---

---

The County shall require new large-scale developments in those areas identified in the Vulnerability Assessment as having climate vulnerabilities, including those located in avalanche-prone areas, to develop Emergency Preparedness Plans.

---





# Constrained Roadways & Bridges

- Comprehensive EPEPs should take into consideration possible constrained roadways and bridges and alternate routes
- Consider underground parking structures as well



# EPEP Guidance for Discretionary Projects



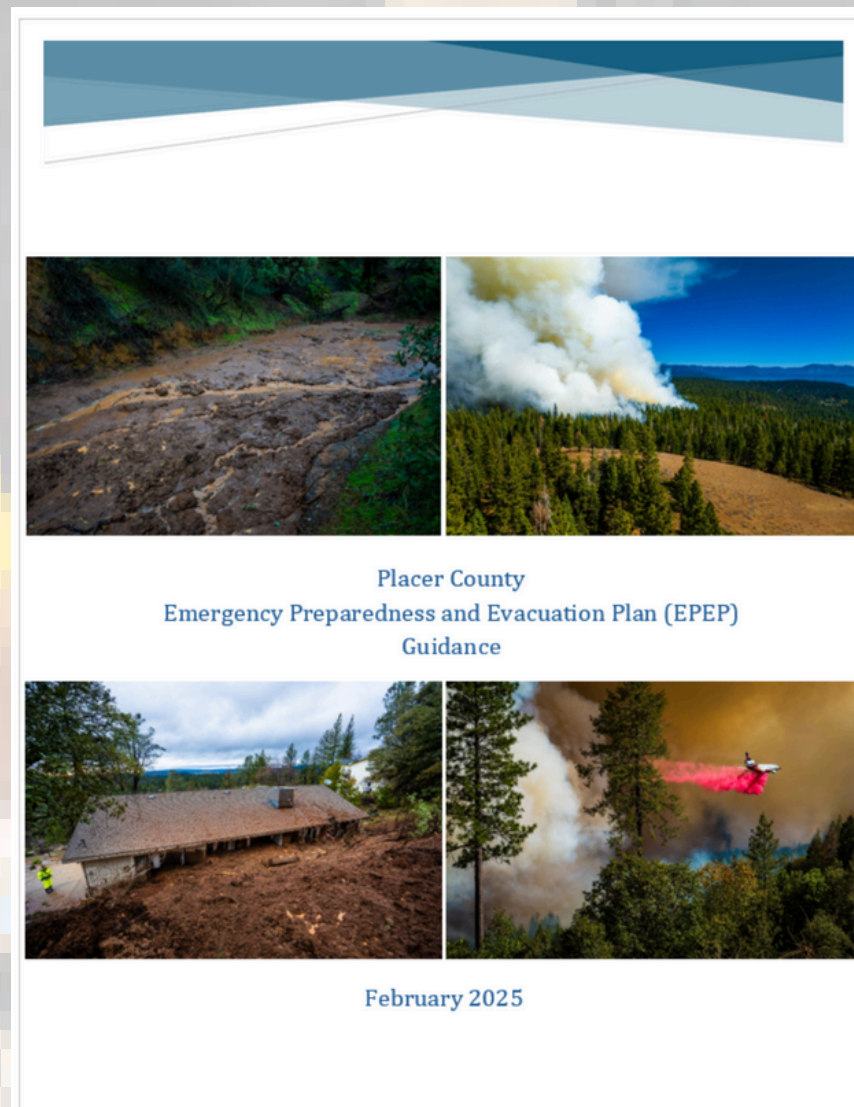
Placer County  
Emergency Preparedness and Evacuation Plan (EPEP)  
Guidance



February 2025



# EPEP Guidance Contents



## Introduction and Purpose

## Background

- Landslide Risk
- Flood Hazard Risks
- Wildfire Hazards
- Avalanche Hazards
- Constrained Roadways & Bridges
- Underground Parking Facilities

## Project Questionnaire

## Emergency Preparedness and Evacuation Plan Contents

## Resources



# Introduction and Purpose



Disclaimer: document is solely guidance, not legal advice



Includes information about state law and local policies that led to the creation of this document



Outlines when an EPEP is necessary and why it is important



# Project Questionnaire

---

Density of a development

---

Population type

---

Known climate hazard zone

---

Fire severity zone

---

Evacuation-constrained area

---

Located within Tahoe Basin Area Plan



# Project Questionnaire cont.

1. Does the project propose an increase in residential density?
2. Does the project propose visitor-heavy facilities, large commercial or mixed-use projects?
3. Does the project include uses that serve vulnerable populations (i.e. mobility or evacuation challenges, such as senior housing, assisted living facilities, childcare centers, or medical facilities)
4. Is the project located in a known climate hazard zone (Health and Safety Element):
5. Is the project located in a fire severity zone or state responsibility area, local responsibility area, or federal responsibility area?
6. Is the property situated in an evacuation-constrained area, meaning the project site lacks at least two points of emergency access, has limited roadway access, and/or exhibits restricted ingress/egress for emergency evacuation, or identified as a constrained area in Figure 13 of the Health and Safety Element?
7. Does the project require access/egress across a bridge that serves as the single access point of the evacuation route, as listed in Table 5 of the Health and Safety Element?
8. Is the project located within the Tahoe Basin Area Plan (TBAP)?



# **Required Contents of the EPEP**

- i. Introduction**
- ii. Existing Conditions**
- iii. Regulatory Requirements**
- iv. Fire Prevention and Emergency Planning**
- v. Evacuation Plan**
- vi. Evacuation Timing Analysis**
- vii. References**
- viii. Appendices**



A background image showing a community meeting. Several police officers in dark uniforms are standing and talking to a group of people. One woman in a yellow shirt is in the foreground, looking towards the officers. The scene is outdoors with trees in the background.

# **Standard Conditions of Approval & Mitigation**

- **EPEP Submission Prior to Permit Issuance**
- **Tenant Acknowledgement of EPEP**
- **Lodging Guest Notification of EPEP**
- **Accessibility and Language Inclusion**
- **Projects with Valet Parking**
- **Public Notification and Training**
- **Signage and Wayfinding**
- **EPEP Updates**
- **Integration with County Emergency Operations**





# CEQA & Mitigation

**XX. WILDFIRE** – If located in or near state responsibility areas or lands classified as very high fire hazard severity zones, would the project:  
Substantially impair an adopted emergency response plan or emergency evacuation plan?

## Mitigation Measure XX: Emergency Preparedness and Coordination

Prior to issuance of the certificate of occupancy, the Developer shall furnish copies of the project's Emergency Preparedness and Evacuation Plan (EPEP) to the County's Office of Emergency Services (OES), the serving fire protection district, and the Sheriff's Office for their records.

The Developer shall also:

- Provide bi-annual updates to County emergency management agencies and revise the EPEP as needed.
- Tenant acknowledgement of the EPEP
- Lodging guest notification (if applicable)
- Public notification and training
- Participate in at least one emergency response drill on a bi-annual basis, if requested by the County.
- Install necessary wayfinding and emergency signage in coordination with County safety officials.

Evidence of compliance, including documentation of coordination meetings and drill participation, shall be submitted to Environmental Coordination Services and Building Services.



# Webpage

EPEP Webpage

Purpose Statement

Link to Guidance Document

Links to Resources

## ***EPEP Webpage:***

<https://www.placer.ca.gov/10114/Emergency-Preparedness-Evacuation-Plan-G>

## EMERGENCY PREPAREDNESS EVACUATION PLAN GUIDANCE



### Purpose of the Emergency Preparedness and Evacuation Plan Guidance

An Emergency Preparedness and Evacuation Plan (EPEP) is a document that may be required for developments in Placer County that are in natural disaster hazard areas. If a project is in an area with only one road or bridge for emergency escape or fewer than two ways out, an EPEP is needed.

The EPEP Guidance Document was created to assist developers in understanding when an EPEP is necessary, how to prepare an effective plan, and how to ensure compliance with the county's Health and Safety Element. This document is designed to clarify requirements and reduce the need for extensive one-on-one support from County staff, thus streamlining the process for developers and County Staff simultaneously.

This initiative stems from the Board of Supervisors' recent amendment to the Health and Safety Element of the Placer County General Plan, which introduced new policies for land use in climate hazard areas. The EPEP Guidance Document supports the enforcement of these policies, helping to mitigate risks and ensure the safety of future residents in proposed developments.

The EPEP Guidance Document attempts to ensure that developers prepare their plans in a way that minimizes the impacts of local hazards, reduces the likelihood of injury or loss of life, and preserves critical infrastructure.

The Placer County Board of Supervisors approved the Sustainability Plan which included climate adaptation goals and policies related to evacuation, adopted through the Vulnerability Assessment in 2021. This document aids in the enforcement of these goals and policies.

### Emergency Preparedness and Evacuation Plan Guidance EPEP Guidance Document (February 2025)

- [FINAL EPEP Guidance Doc](#)
- [Project Questionnaire \(EPEP\)](#)



# Resources



Eastside Emergency Evacuation Plan



Lake Tahoe Regional Evacuation Plan



The Village at Palisades Tahoe



Tahoe Basin Area Plan



# Moving Forward – *Breaking Down Silos with EPEPs*

## Key Takeaways:

- EPEPs are **site-specific, data-driven tools** that ensure new development is safe and defensible in hazard-prone areas.
- They help meet **state mandates** (SB 1241, SB 379, AB 747/1409) and support **local policy goals**.
- The guidance promotes **cross-departmental collaboration**—bridging planning, fire, sheriff, and OES.



# Thank you!

**Angel Green** [agreen@placer.ca.gov](mailto:agreen@placer.ca.gov)

Senior Planner

Placer County Community Development Resource Agency

530-745-3084

**Webpage:** [www.placer.ca.gov](http://www.placer.ca.gov)

(Search: EPEP)





# Innovative Models for Planning and Resilience

---



**Cory Peterson**  
**Senior Transportation Planner**

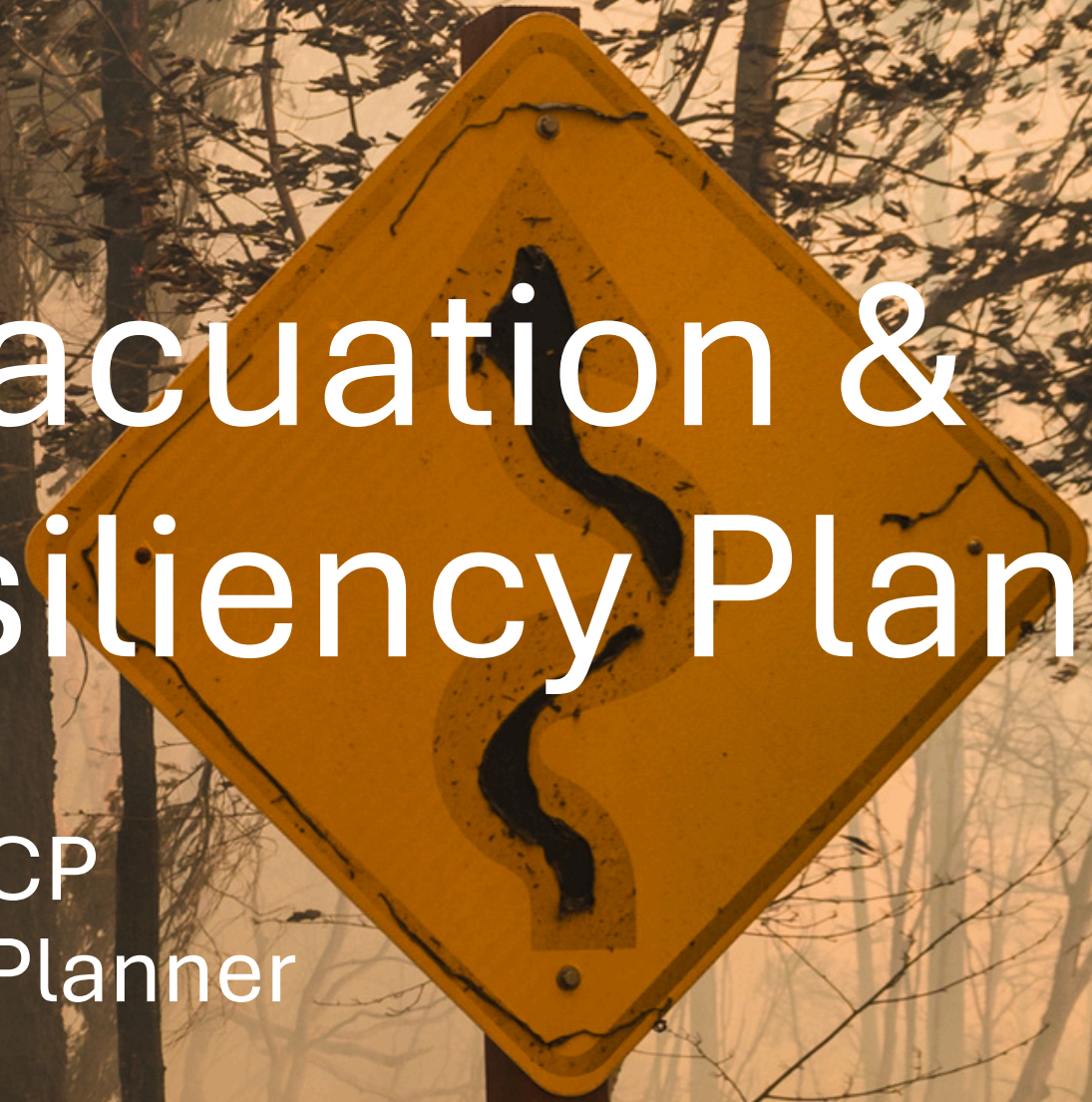


# Placer County Evacuation & Transportation Resiliency Plan

 Cory Peterson, AICP  
Senior Transportation Planner  
June 24, 2025



**Placer County  
Transportation  
Planning Agency**



0 13



# Background

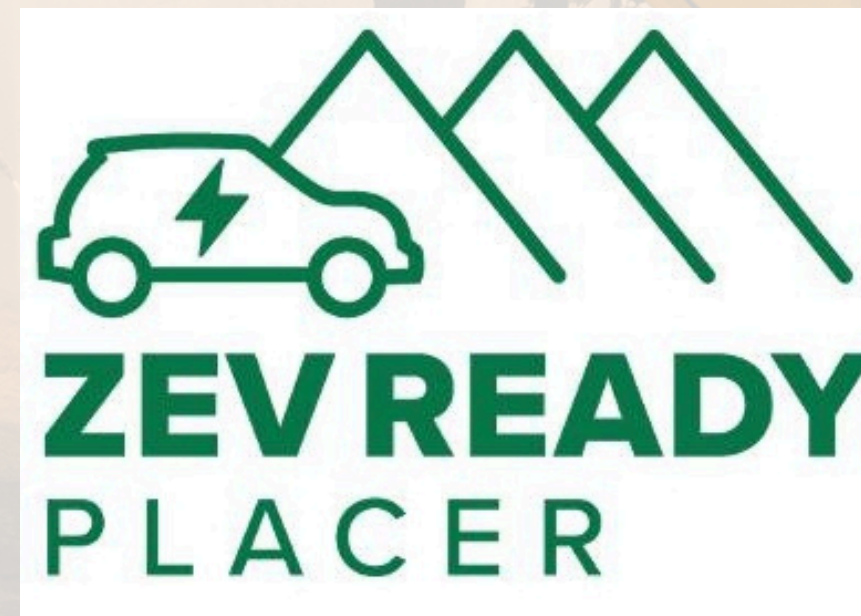
- Partnered with Placer County Office of Emergency Services (OES) to submit state grant application
- Awarded \$630,000 (plus \$100,000 local match)
- Hired DKS Associates to prepare plan
- Kicked off in June 2025





# Parallel Efforts

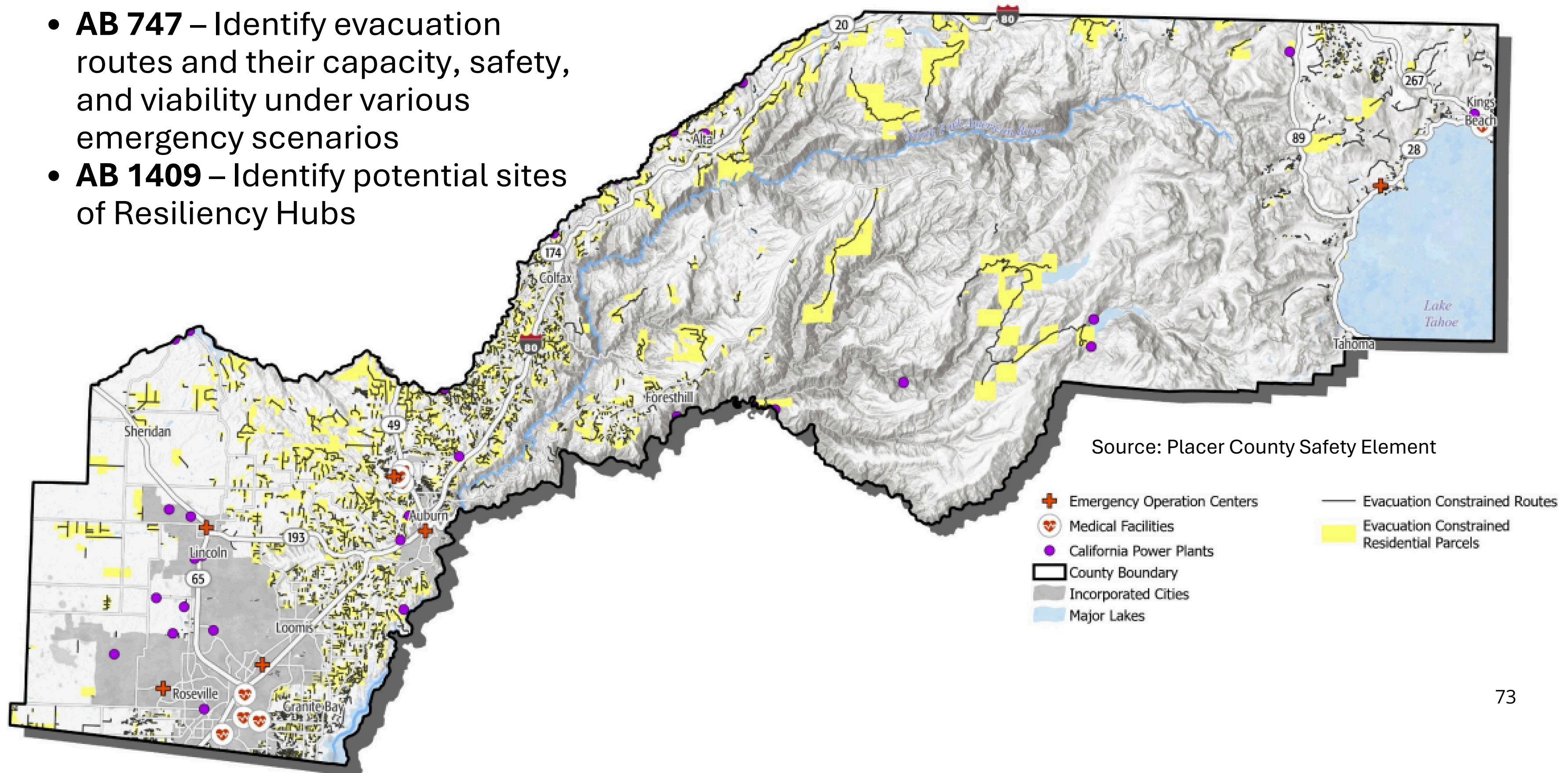
- Placer County General Plan Update
- Placer County Local Hazard Mitigation Plan Update
- Community Wildfire Protection Plan
- PCTPA Countywide Zero Emission Vehicle Plan





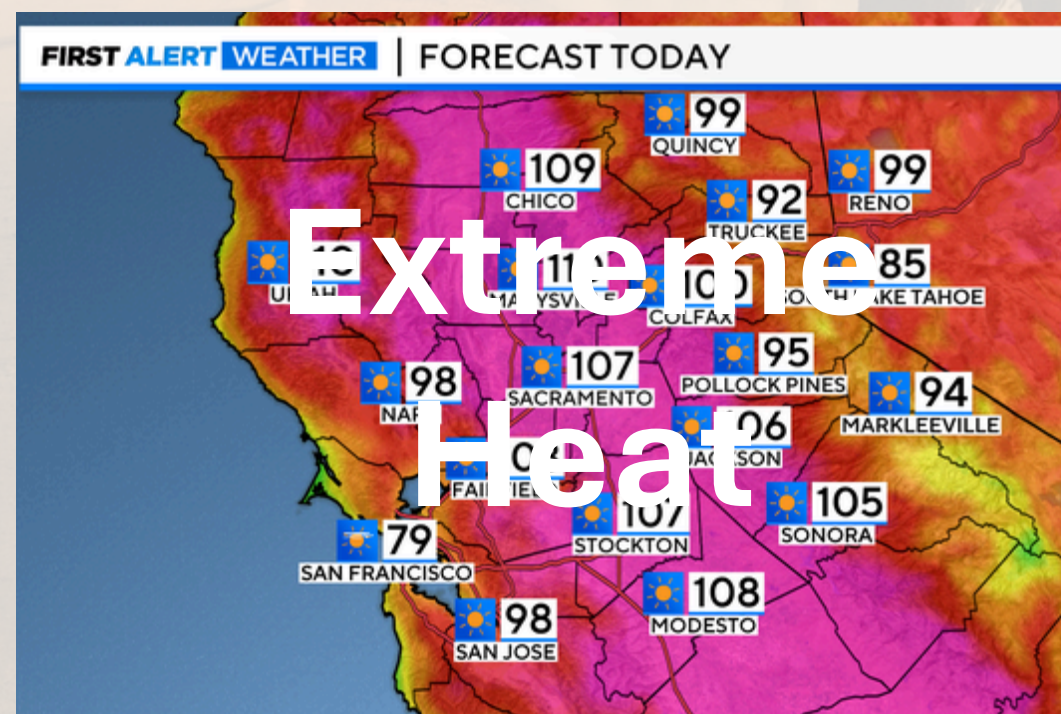
# Addressing Regulations

- **AB 747** – Identify evacuation routes and their capacity, safety, and viability under various emergency scenarios
- **AB 1409** – Identify potential sites of Resiliency Hubs





# Hazards





# Why Prepare an ETRP?

- Incidents are increasing in number and severity
- In Placer County alone over the last four years:
  - 2021 River Fire: 2,619 acres
  - 2022 Mosquito Fire: 76,788 acres
  - 2022-2023 Winter Snow: 677 inches





# Why Prepare an ETRP?

It's estimated that:

- Placer's extreme heat days will rise from a historical average of 4 per year to 22-32 by 2050, and 33-62 by 2100 (depending on location)
- Acres burned will rise from 2,500 annually to:
  - 3,100 between 2040 and 2060
  - 3,800 between 2070 to 2090





# Severity Zones

Source: Placer County Safety Element

- Reservoirs and Water Treatment Plants
- California Electric Substations
- California Power Plants
- Airports
- Emergency Operation Centers
- Fire Stations
- Medical Facilities
- Electricity Transmission Lines
- County Boundary
- Incorporated Cities
- Major Lakes

**Fire Hazard Severity Zones (Hazard Class)**

State/Federal Responsibility Areas

- Moderate
- High
- Very High

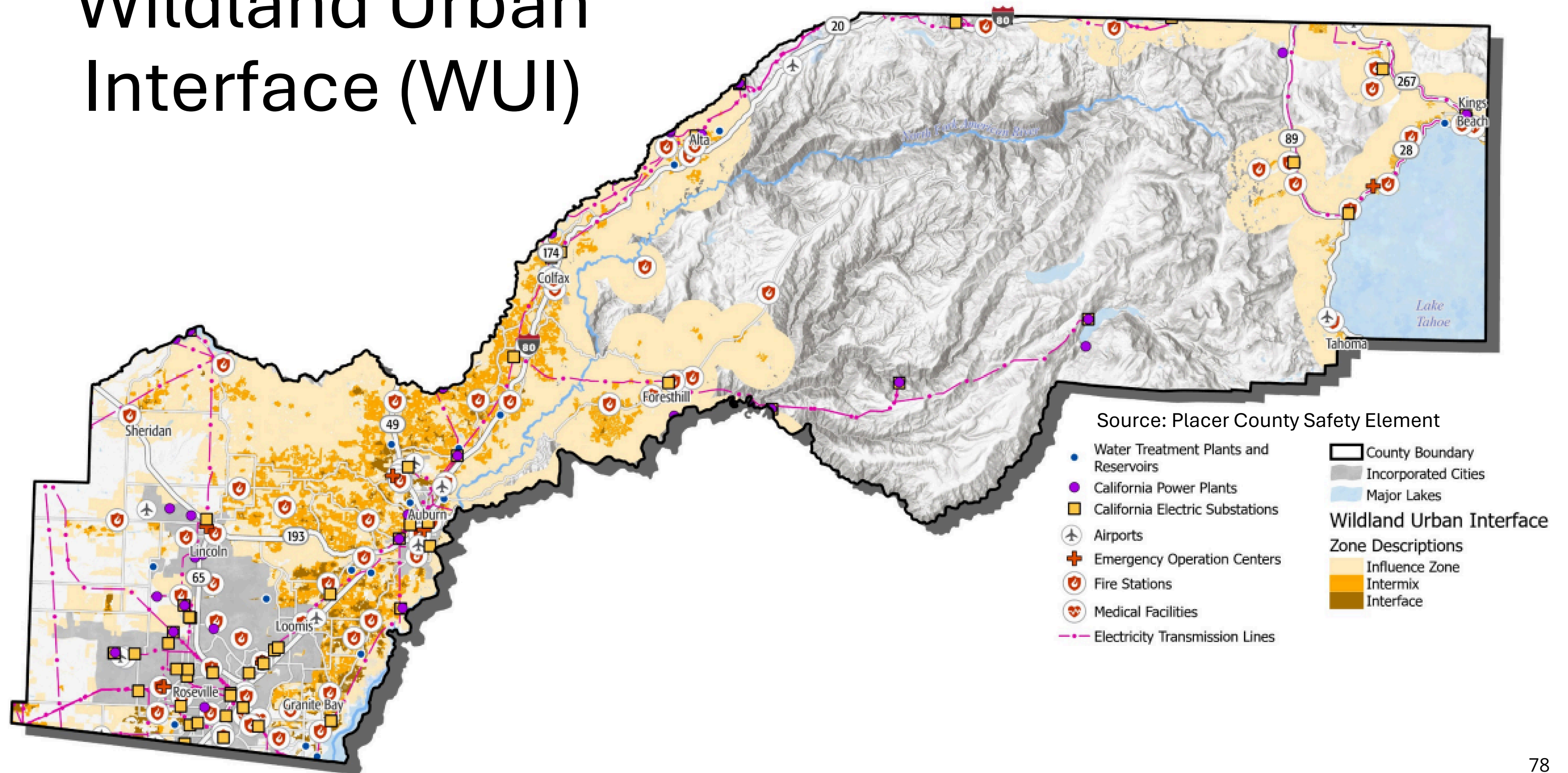
**Local Responsibility Areas**

- Moderate
- High
- Very High

77

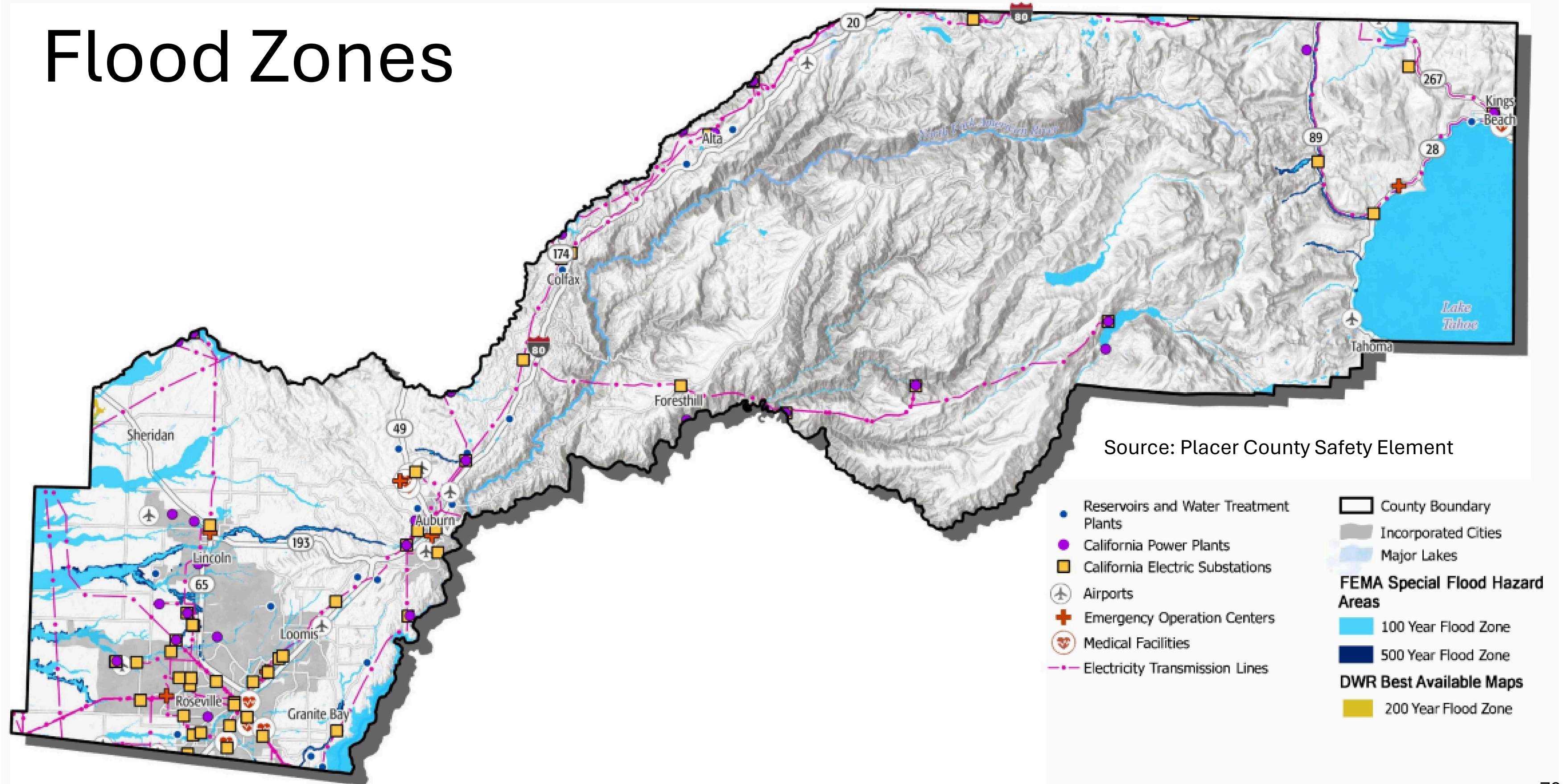


# Wildland Urban Interface (WUI)



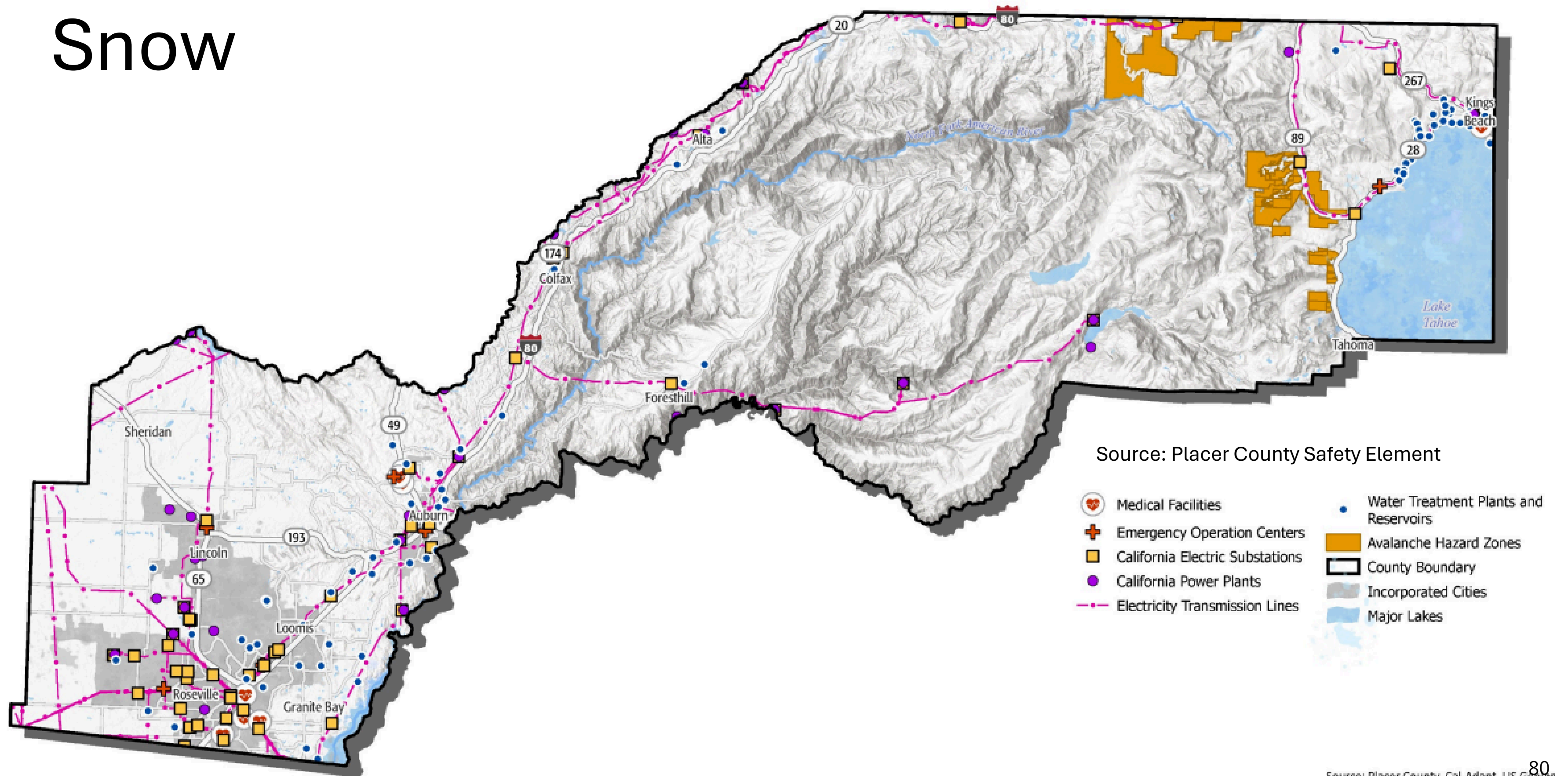


# Flood Zones



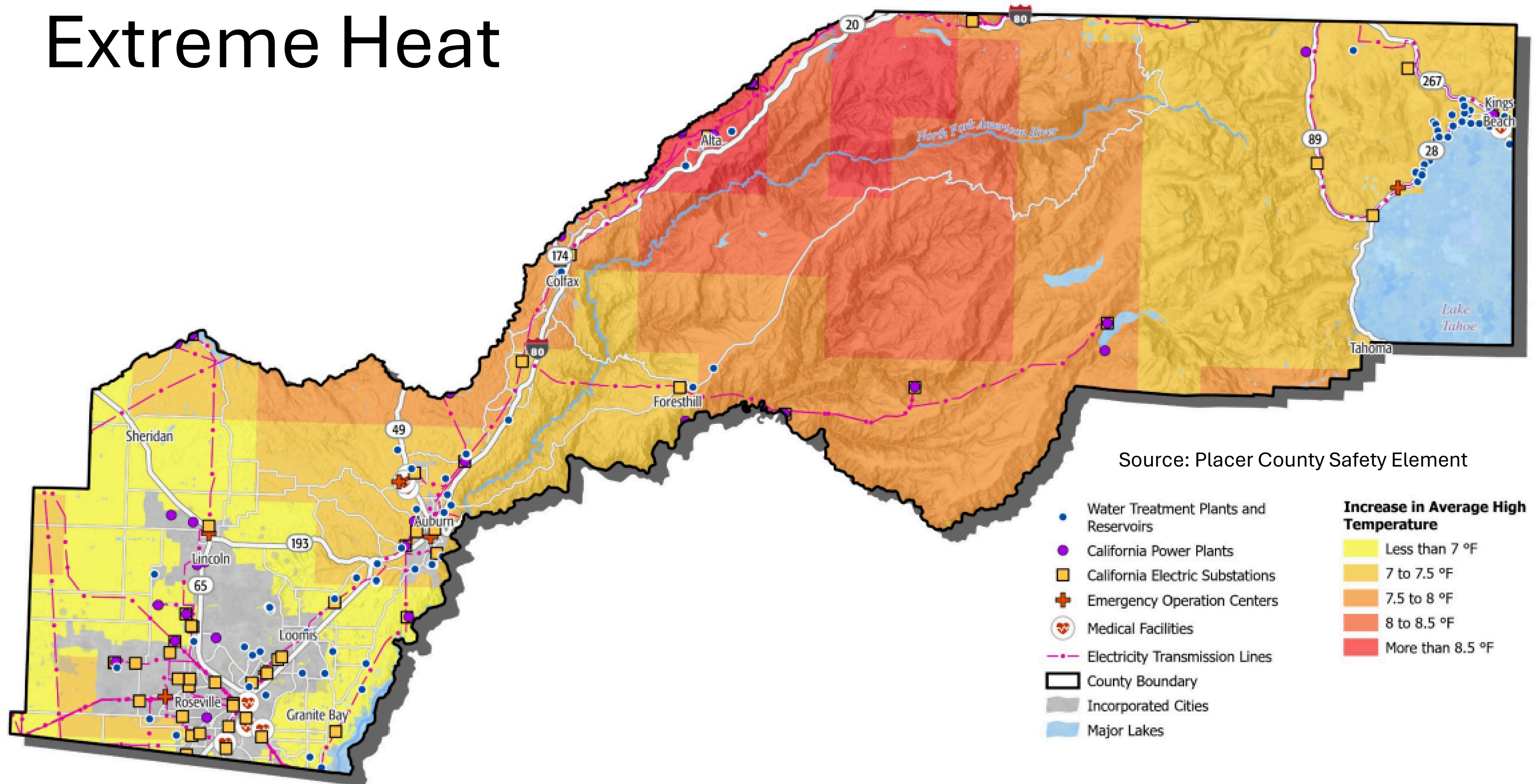


# Snow





# Extreme Heat





# Objectives

- Identifying Vulnerabilities
- Collaboration with Agencies
- Public Awareness & Education
- Special Needs Considerations
- Technological Solutions
- Project Identification
- Resiliency Hubs & Facilities
- Impact of Zero-Emission Vehicles





# Identify Vulnerabilities

- Document recent climate events
- Evaluate the transportation network for various climate vulnerabilities
  - One-way in/out
  - Bottlenecks/pinch points
  - Vulnerable bridges, or bridges serving one-way in/out
  - Areas that frequently flood
- Demographics and underserved communities
- Communications structures





# Collaboration with Agencies

- Placer County Office of Emergency Services
- Placer County Sheriff's Office
- CALFIRE/Placer County Fire Department
- Six incorporated cities/town and County of Placer
- Local fire and police departments
- Fire Safe Councils
- State agencies: Caltrans
- Federal agencies: U.S. Forest Service
- Utilities: PG&E, Pioneer, Liberty Utilities





# Public Awareness & Education

- Live Online Workshops
- Online Surveys
- Community Based Organization & Tribal Outreach
- Project Website
- Project Development Team
  - Focused Group Meetings
- Presentations at Governing Boards, Fire Safe Councils, and Municipal Advisory Councils (MACs)





# Resiliency Hubs

- Identify and prioritize sites for Resilience Hubs
- Microgrid power stations
- EV charging stations
- Identify amenities at each Resilience Hub and disasters it is capable of aiding
  - Wildfire Evacuation
  - Extreme Heat/Cooling Center
  - Public Safety Power Shutoffs (PSPS)





# Impact of Electric Vehicles

- Analyze EV impact on evacuation
- Microgrids to support EV charging
- EV buses and evacuation
- Charging EVs during Public Safety Power Shutoff (PSPS)





# Project Identification

- Recommend transportation evacuation & infrastructure resiliency projects & strategies
- Examples include:
  - Shoulder widening
  - Vegetation Management
  - Signal Timing/Coordination
  - Roundabouts
  - Contra-Flow Lanes
  - Raising Road
  - Bicycle/Pedestrian Paths
- Communication Structures and Protocols





# Thank you!

Cory Peterson, AICP  
Senior Transportation Planner  
Placer County Transportation Planning Agency  
[cpeterson@pctpa.net](mailto:cpeterson@pctpa.net)



**Placer County  
Transportation  
Planning Agency**



0 13





# **Case Study: Delta Region Geologic Hazard Abatement District**

---

**Dr. Kathleen Schaefer, PhD  
Former Engineer**

**FEMA**



# Case Study: Delta Region Geologic Hazard Abatement District

---

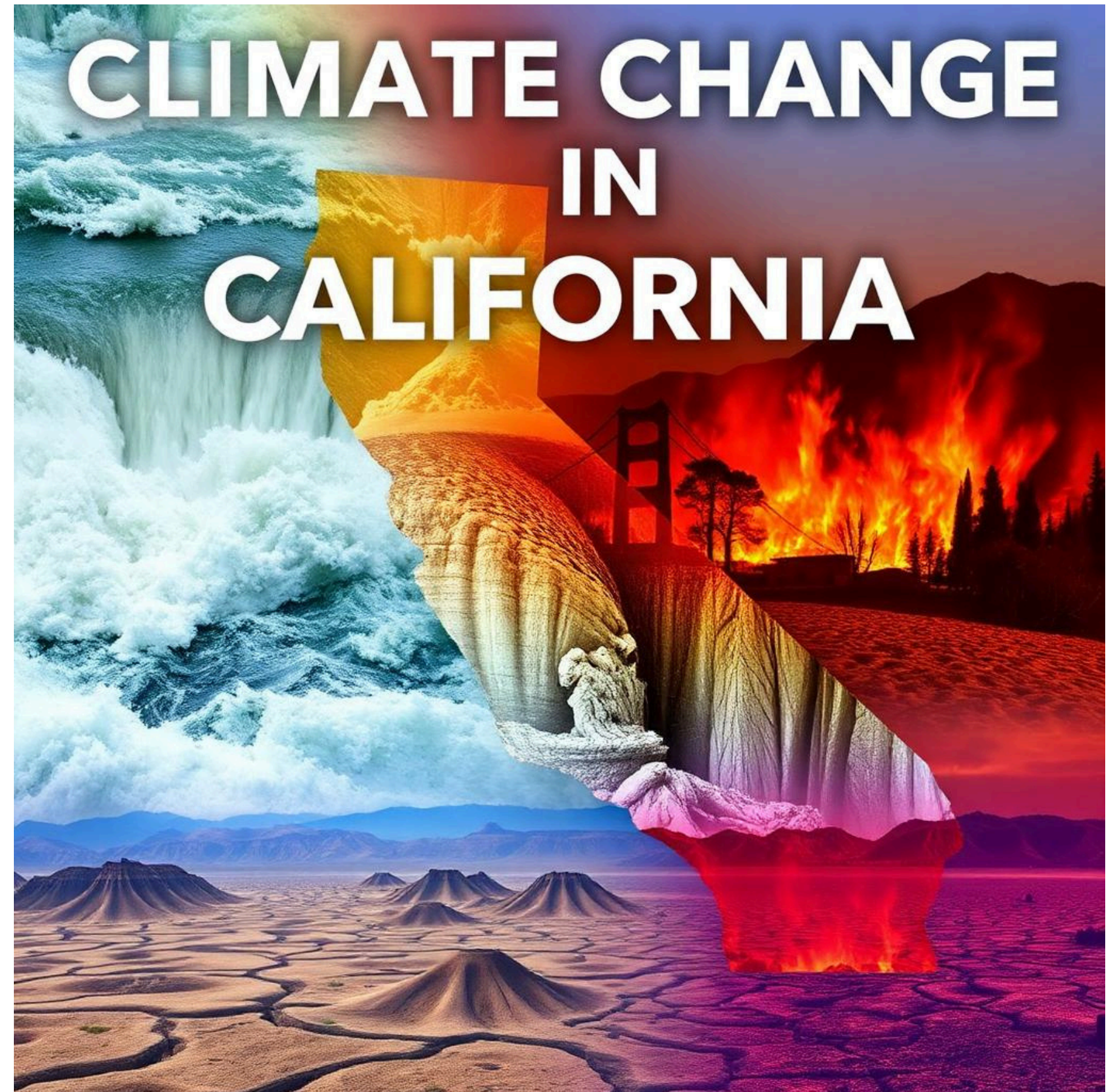




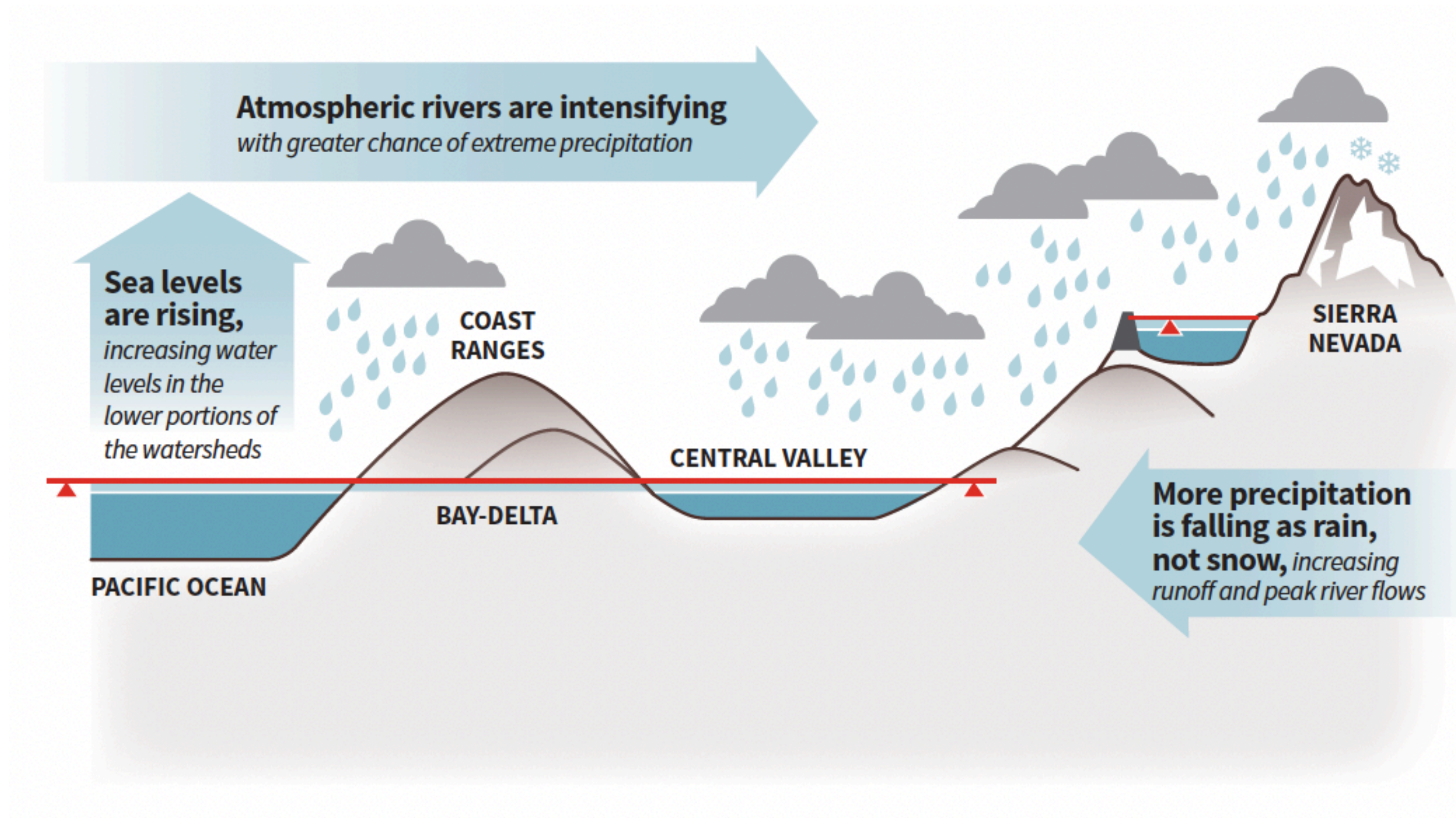
# Introduction



Climate change is creating a ticking financial time bomb for California.



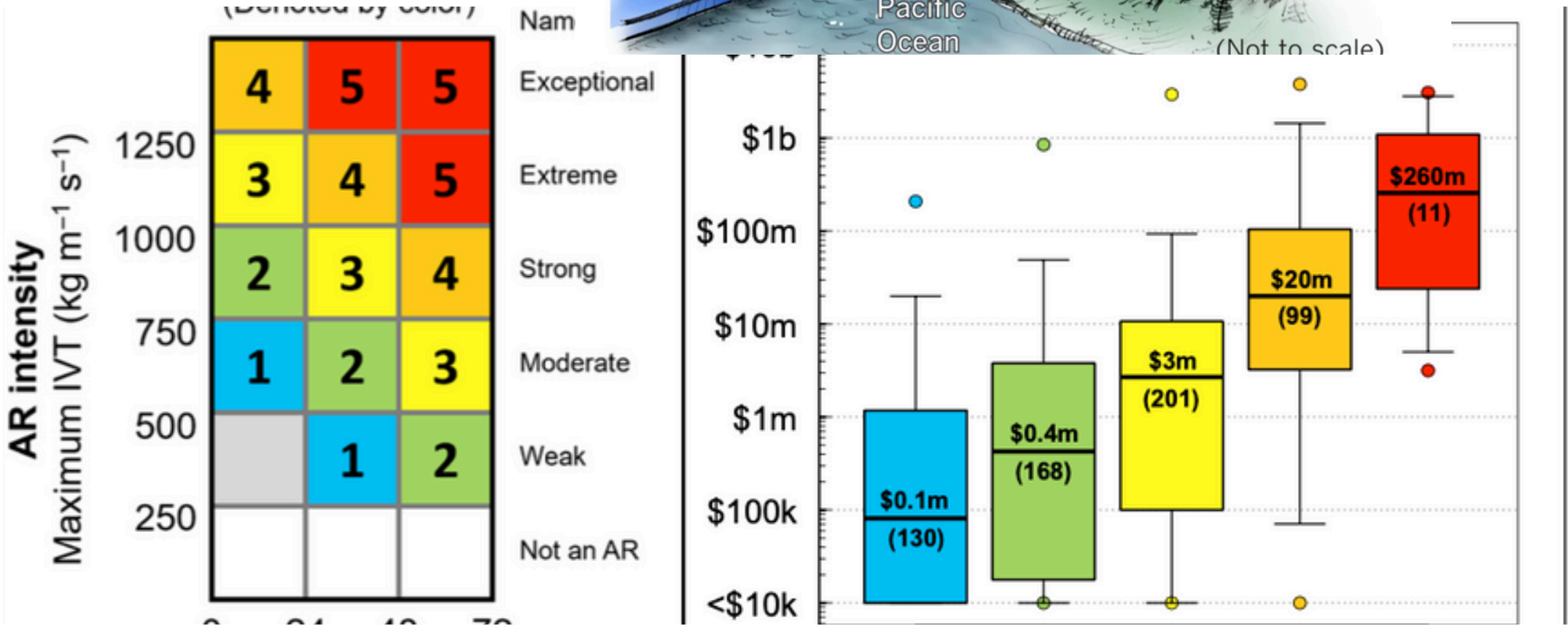
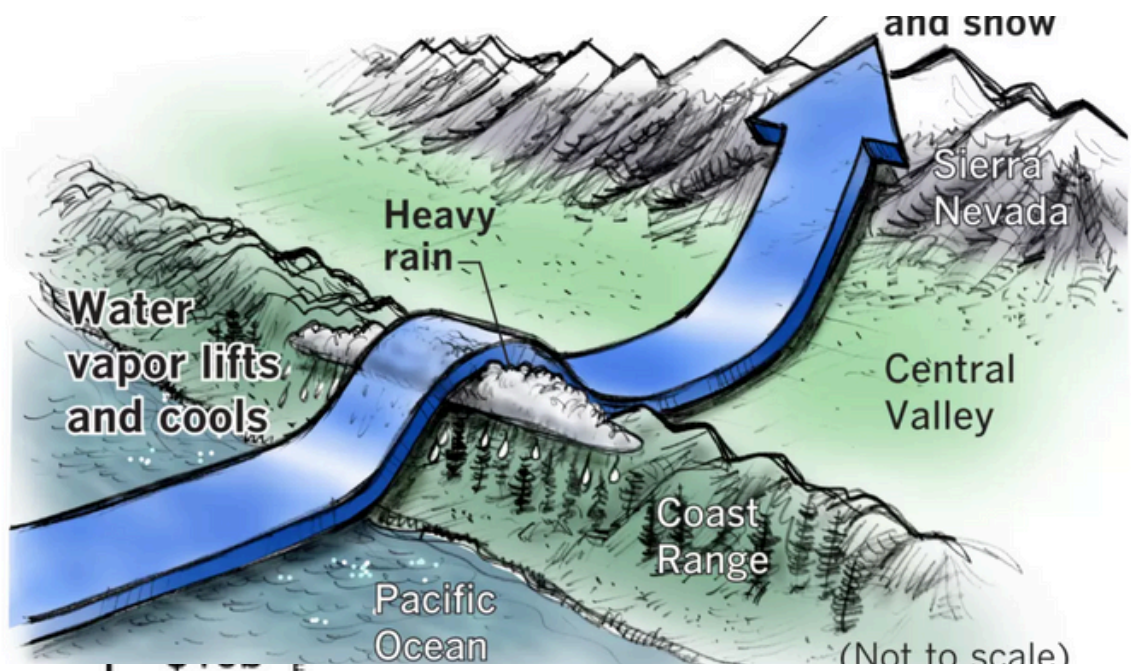




Source 2022 Central Valley Flood Protection Plan Update Highlights.



California's  
Losses  
are AR driven.




Source:  
Corringham 2019



# What is the problem we are trying to solve?



 We have an enormous financial protection gap.

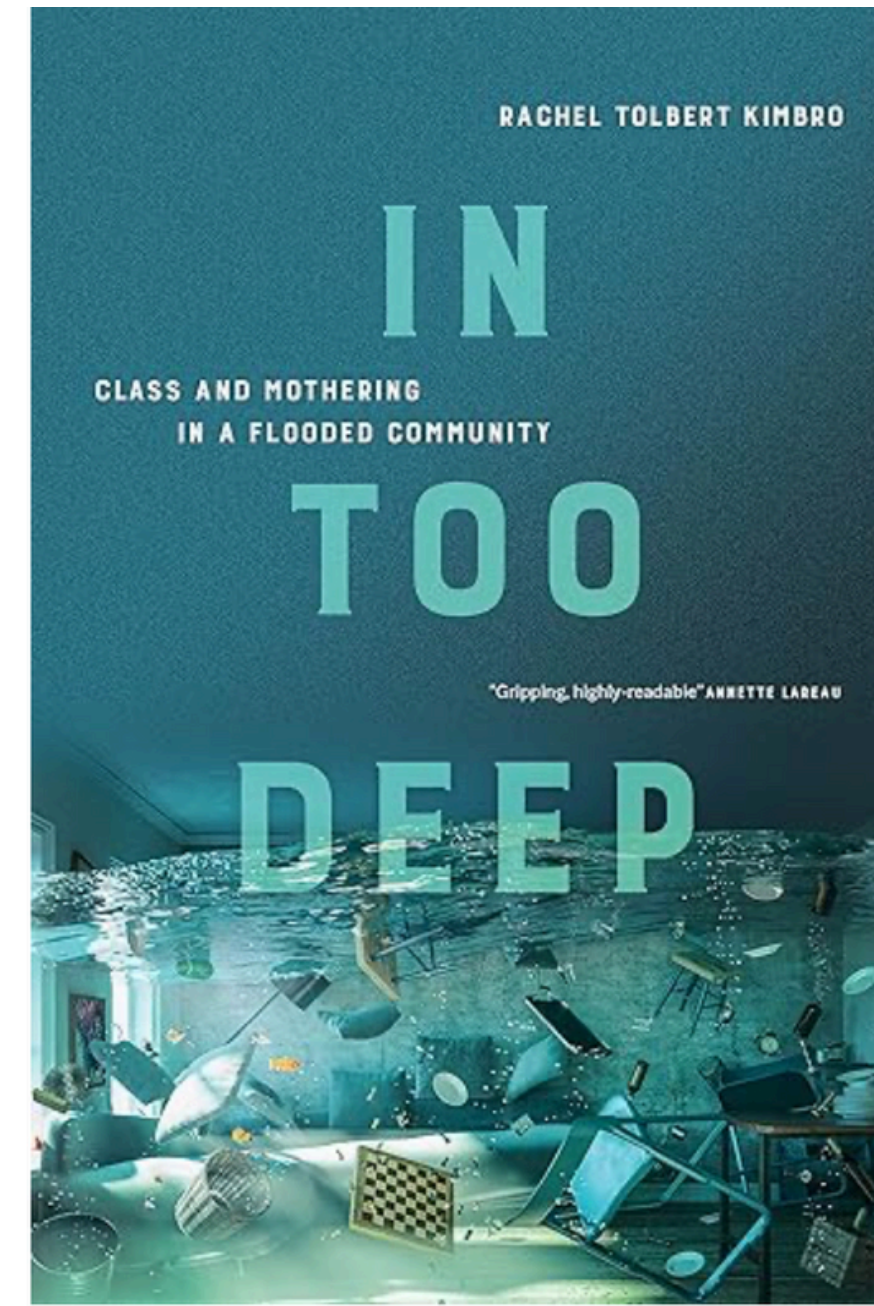
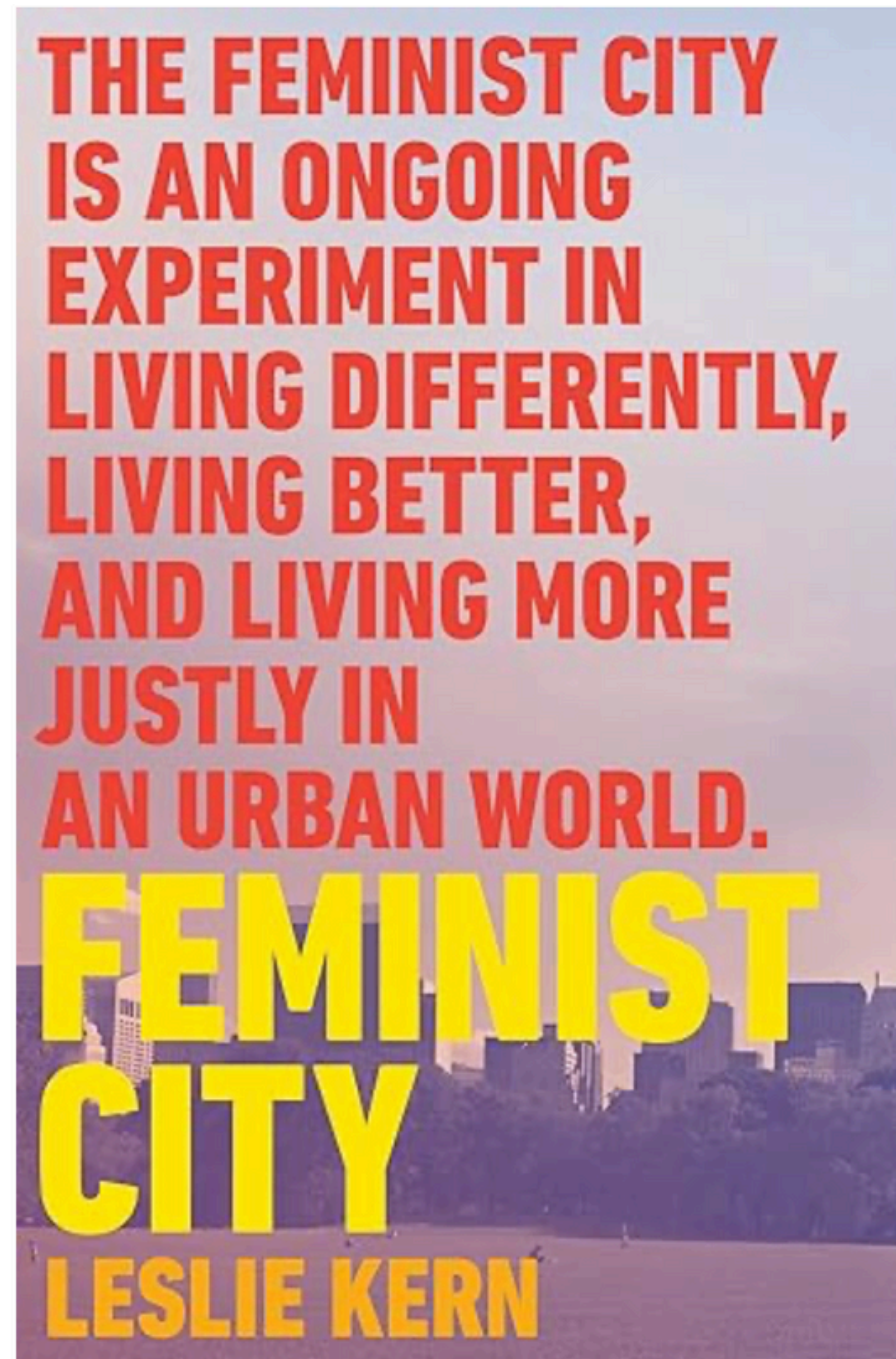
---





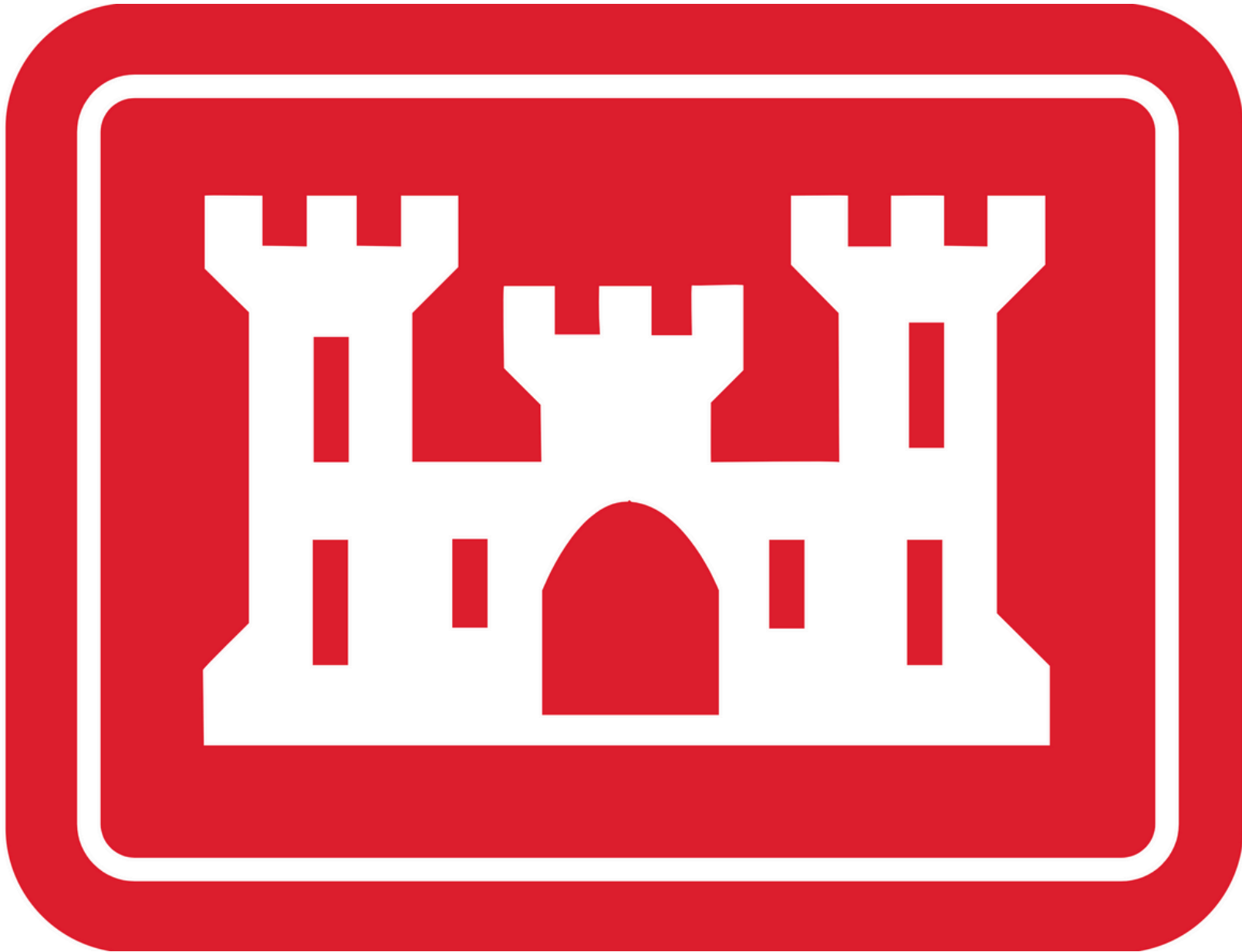
# Feminist City by Leslie Kern

## In Too Deep by Rachel Kimbro





# USACE and FEMA





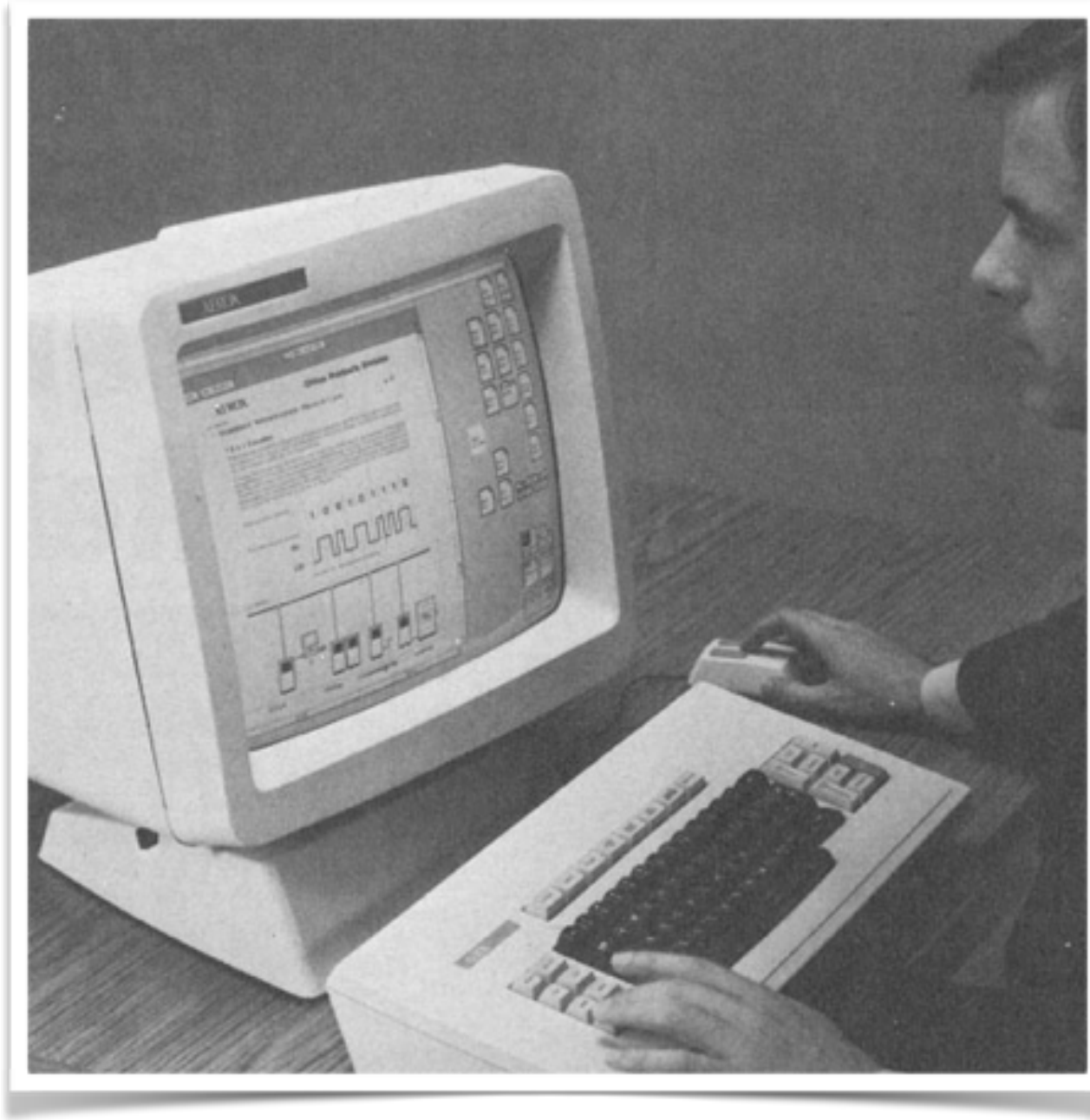
# 1968 — Response



- The National Flood Insurance Act of 1968 is passed. Provides flood insurance in communities that voluntarily adopt flood plain management ordinances.  
**Founded on the belief that if you provide it they will come.**



# 1968 — Computer



- When the NFIP was created this was the available computing power.
- The underlying structure and rules of the NFIP are founded on this technology.



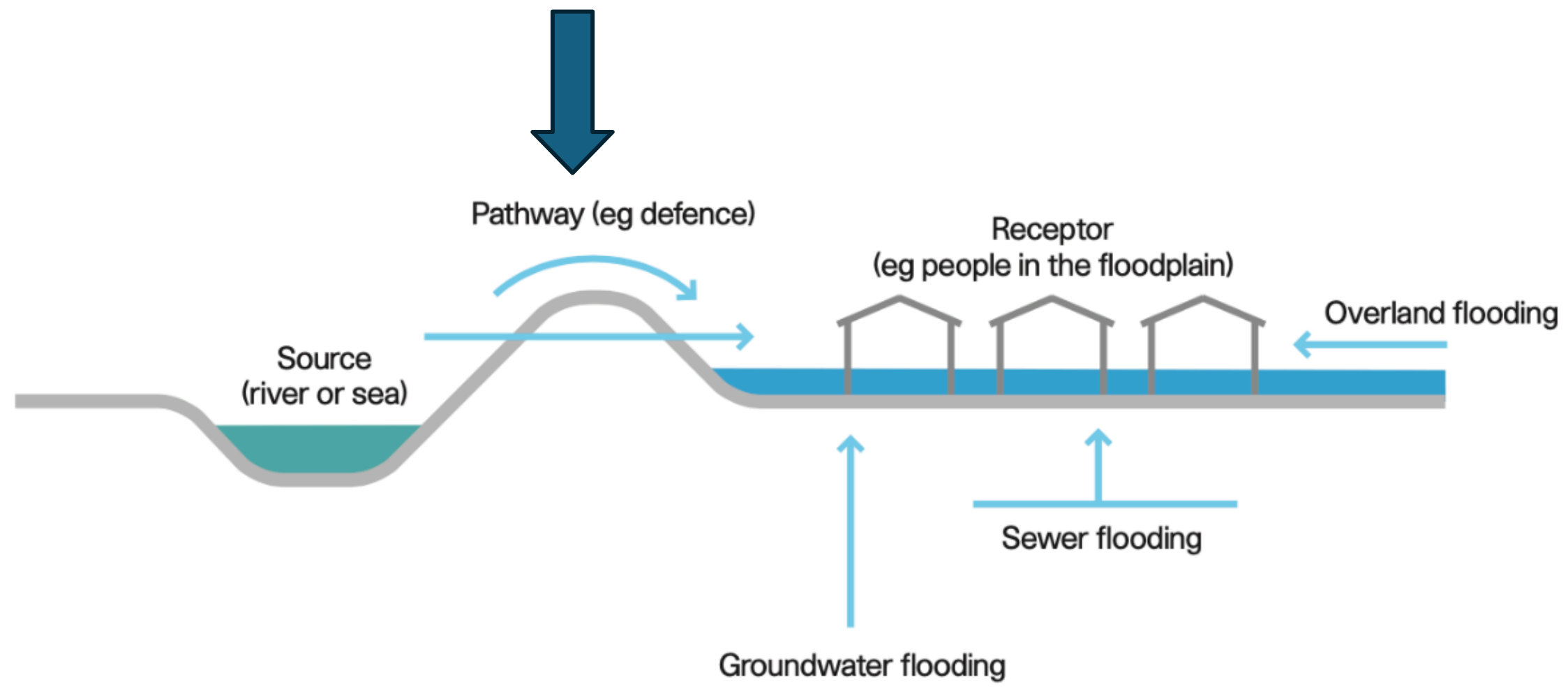




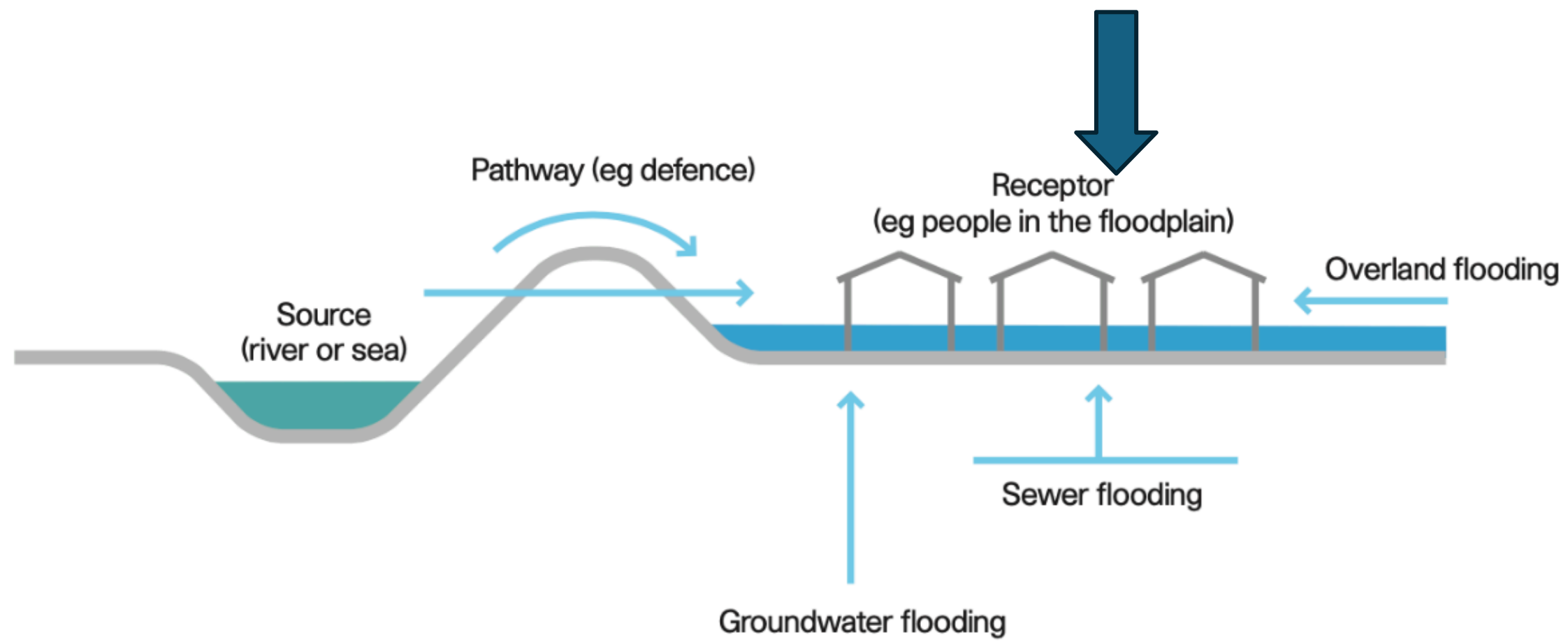




traditionally  
focused here.  
How do we build







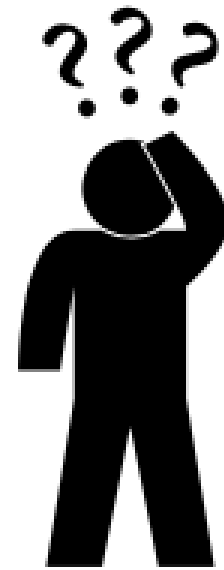


# Fast Brain Slow Brain Thinking





# What is ergodicity?





**Ergodicity is the "Law of Large Numbers on Steroids".**



**One die thrown 100  
times**



**=**

**100 dice thrown 1  
time**









**Insurance is the business of selling the "Law of large numbers as a service."**

**Insurance is the business of transforming non-ergodic events and condtions into ergodic events.**









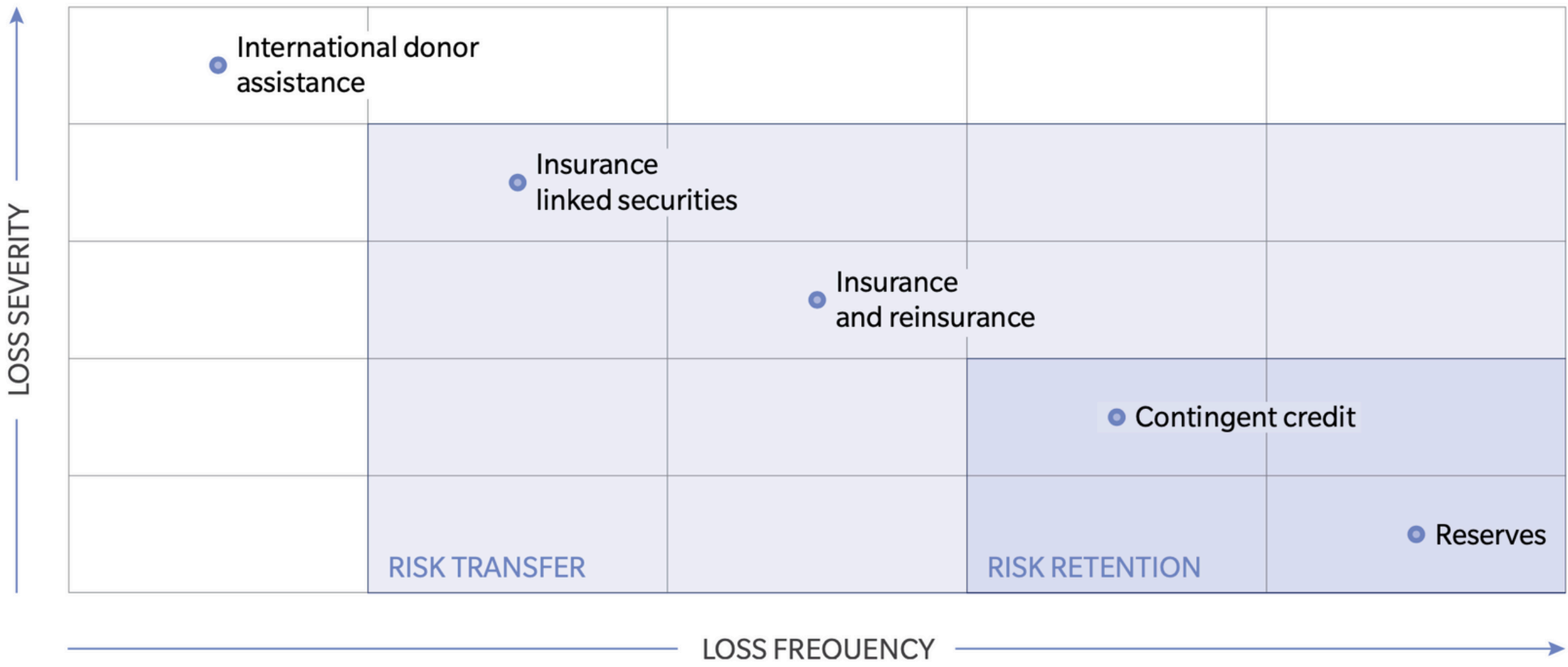


# Geologic Hazard Abatement District

- Established by the Beverly Act in 1979
- Independent, state-level public entity to oversee geologic hazard prevention, mitigation, abatement, and control
- Easy to form; boundaries drawn to maximize the benefit to voters
- Perpetual assessments are collected with property tax payments, eligible for local tax deduction; and have bonding ability
- No limitation as to number of units, area or contiguity



**Exhibit 2: Layering in action**



**Source:** World Bank



# Parametric Insurance Basics



Parametric insurance provides a policy that pays out a pre-defined amount based on a pre-agreed trigger. For community flood risk, this has several advantages over traditional insurance.



Clear  
trigger for  
coverage



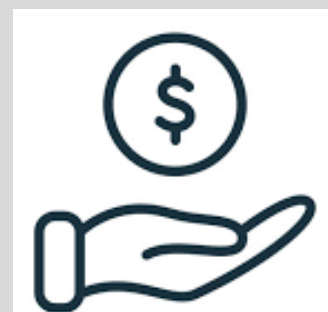
Independently  
verified



Pre-  
agreed  
limits



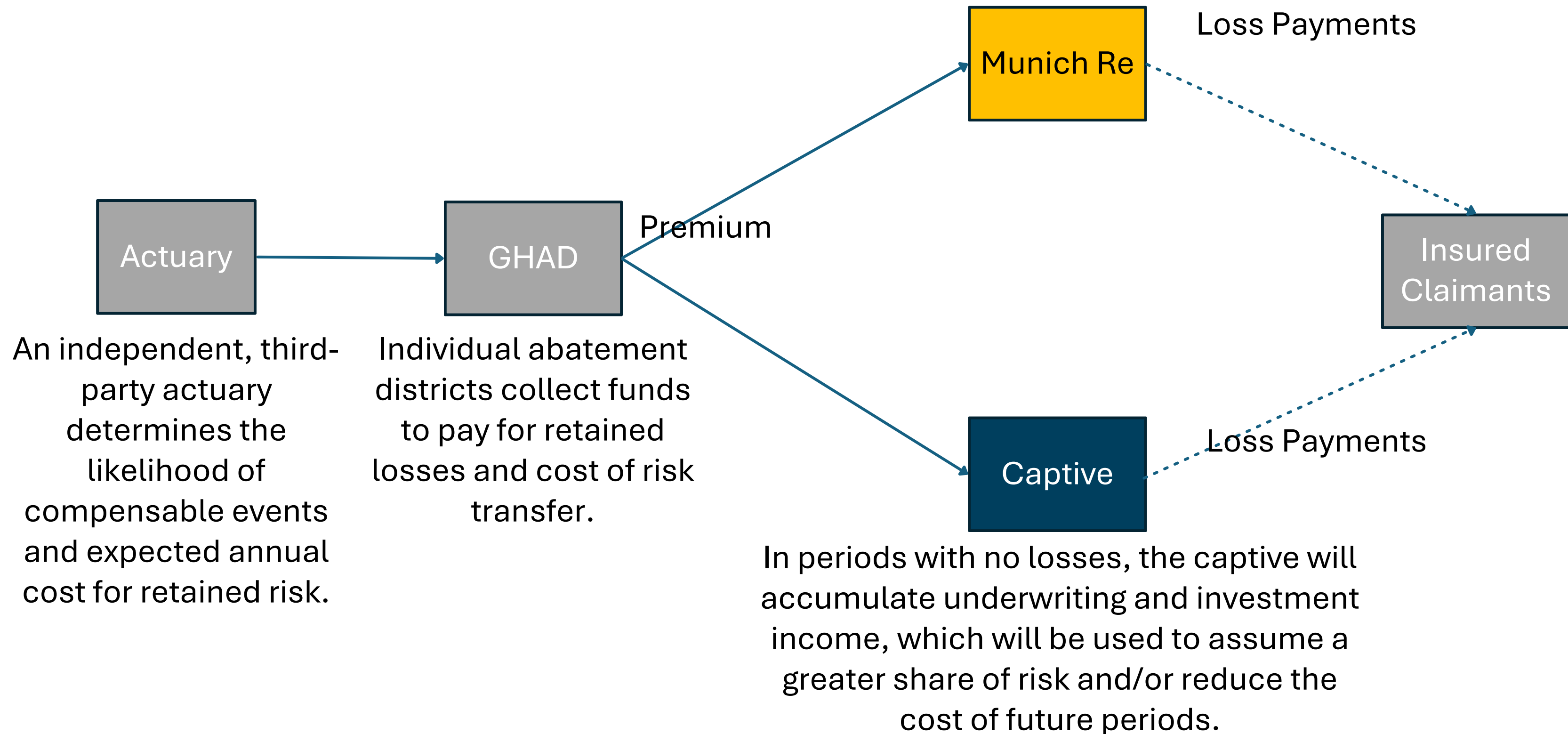
No claims  
process or  
coverage  
dispute



Fast  
payout

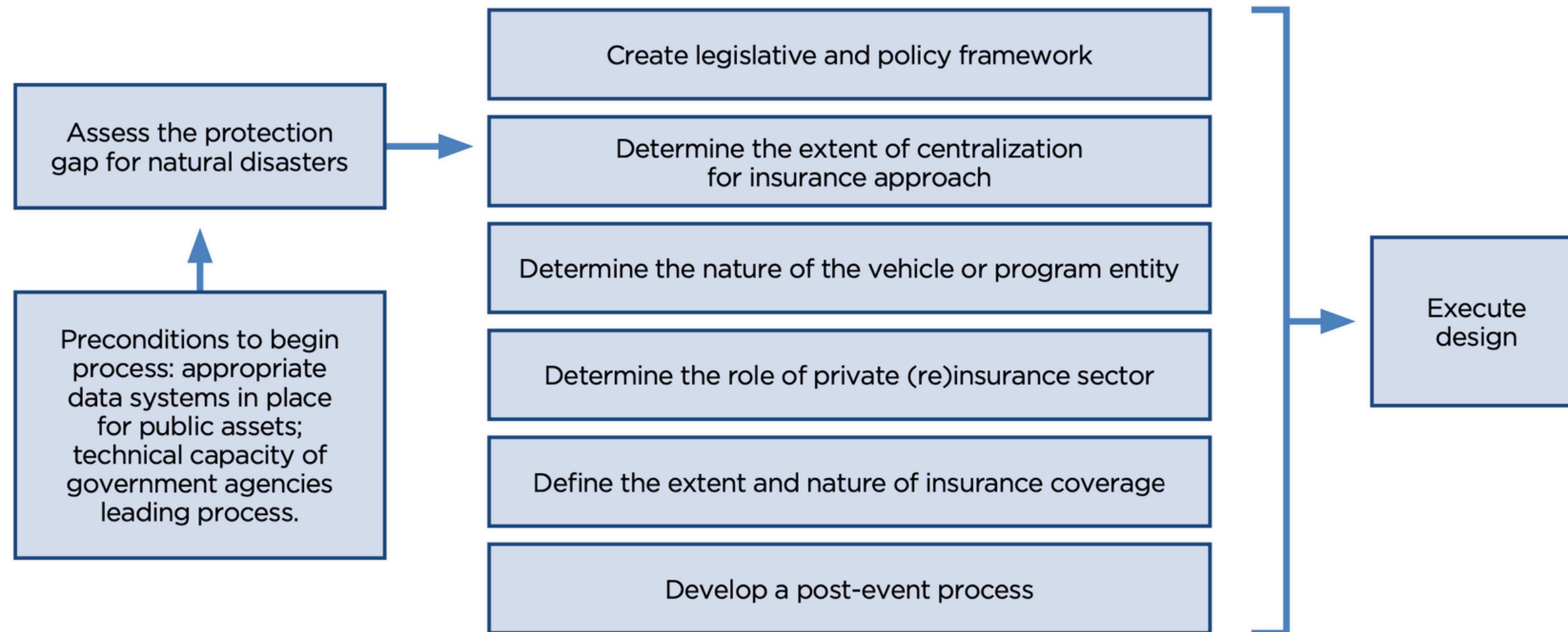


# Cash Flow





# Implementation





# Thanks to:

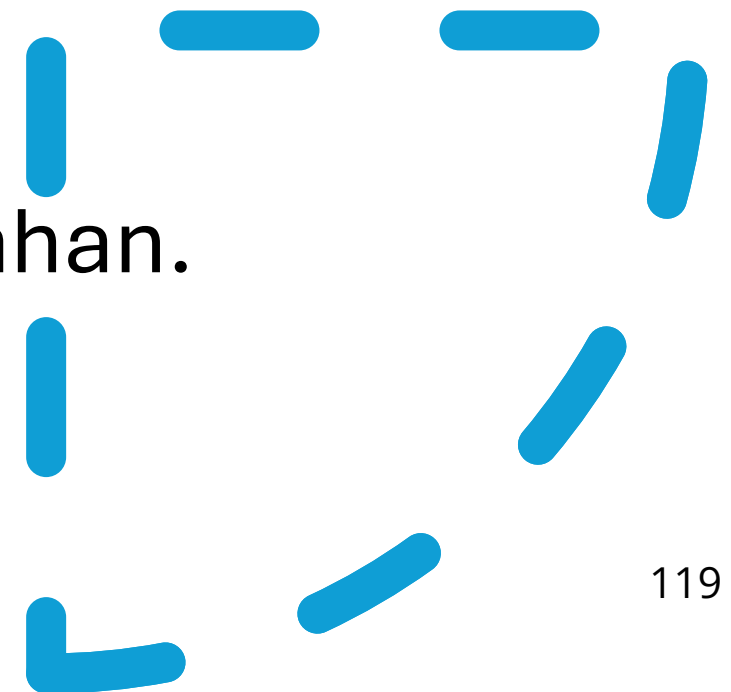
- Mike Mierzwa Department of Water Resources
- Deborah Halberstadt Department of Insurance

To their management for supporting the vision.

- Commissioner Lara
- Director Karla Nemeth

Isleton GHAD board

- Chair Iva Walton,
- Members David Kent and Pam Bulahan.





# For More Information

---

Email: [Kkschaeferca@gmail.com](mailto:Kkschaeferca@gmail.com)

---

LinkedIn: q100lady

---

X: KathyQ100lady

---

Blog: [kathyschaefer.com](http://kathyschaefer.com) (in progress)



# FLOODPLAIN MANAGEMENT ASSOCIATION

WWW.FLOODPLAIN.ORG



*To promote the common interest in reducing flood losses and to encourage the protection and enhancement of natural floodplain values...*



[Home](#) [Professional Development](#) [Events](#) [Scholarships](#) [Documents & Links](#) [Store](#) [Awards](#) [Contact Us](#) [Member Login](#)

[Join FMA Now](#)

## Upcoming Events

[2025 California Extreme Precipitation Symposium](#)

[2025 Annual Conference](#)

[Sacramento Luncheons](#)

[2019 California Floodplain Risk Management Symposium White Paper](#)

[CRS Training Resources and Opportunities](#)

Enter search criteria...



### Sign In

[f Login with Facebook](#)

[in Login with LinkedIn](#)

OR

Username



Password

[Sign In](#)





# Final Q/A & Post Event Survey

---





# Closing Remarks & Next Steps

---

*Capital Region Climate Readiness Collaborative*

**Grace Kaufman**  
Grace.Kaufman@valleyvision.org

*Thank you for joining us!*



CAPITAL REGION  
CLIMATE READINESS  
COLLABORATIVE

Post Event Survey

