



## CAPITAL REGION CLIMATE READINESS COLLABORATIVE

### Annual Members Meeting: Notes

Monday, September 17<sup>th</sup> | 2:00 – 5:00 PM

Sacramento Food Bank Family Services Center | Sacramento, CA

#### Updates from the Collaborative

---

- Current events
  - Hurricane Florence
    - If Florence were on the West Coast, it would hit our region.
  - Typhoon Mangkhut in Hong Kong and the Philippines
    - This is the strongest storm of the year with three million people evacuated
- Heat awareness campaign
  - Throughout the 2018 heat season, CRC launched a public awareness campaign to highlight the impacts of extreme heat to public health, as well as strategies that can be taken at the individual level to remain safe and build resilience. This campaign was paired with a robust resource library to provide community members with additional information about extreme heat events and the urban heat island effect, implications to health and the built environment, and regional efforts currently underway to adapt and build resilience to increased temperatures. Previous CivicSpark fellow, Edgar Rincon Estrella, had a huge role in launching the campaign and creating the resources.
- Design guidelines
  - CRC is also in the midst of creating Resilient Design Guidelines for architects, developers, property owners, and building managers in the Capital Region. We are forming a technical committee to guide the development of the resource. These guidelines aim to highlight specific design practices, technology, and additional strategies to ensure the resilience of our buildings and safety of its inhabitants to extreme heat and flooding.
- WCB Grant
  - CRC led the development of a grant application to California Wildlife Conservation Board, which if awarded, will bring \$45,995 to create capacity along the urban-rural transect by building a foundation for long-term urban-rural collaboration that will help overcome existing institutional barriers to effectively protect wildland resources. Fingers crossed!

#### Member updates and priorities

---

- Priorities / areas our region should focus on
  - Water

- GHG emission reduction, decarbonization, carbon neutrality, transportation emissions and growing land use - how do we switch buildings and transportation to electric and renewable sources?
- Trauma-informed care / human-centered solutions / individual and personal health
- Funding / financial capacity / investments - How do we connect commitments in our personal lives to change where money is coming and mobilize the financial framework.
- Cultural shift / behavioral change - How do we elevate these issues given competing priorities?
- Extreme weather events (flooding Drought)
- Outreach / community engagement / education / civic participation
- Extreme heat
- Forest management & resiliency / annual wildfires
- Racial and economic justice – how is this integrated into climate adaptation and mitigation planning?

## SACOG Green Region Program

---

**Garett Ballard-Rosa** | Senior Analyst, Sacramento Area Council of Governments (SACOG)

### Background on SACOG

- SACOG is a 6-county planning agency
- Sacramento region blueprint - links land use and transportation
  - The goal of the blueprint is to integrate land use and transportation planning to curb sprawl, cut down on vehicle emission and congestion in order to improve the quality of life for residents of the region.

### Green Region Program

- This program is aimed at reducing vehicle emissions and moving our region toward a zero emission future. This program is open to both public and private organizations.
- The Plan focuses on five groups of projects: personal vehicles, shared rides and vehicles, public and private microtransit and shuttles, medium and heavy duty fleets, and disadvantaged communities.
- Applications for this program need to demonstrate that implementation and plans align.
- About \$120 million available – robust policy discussion with board
- This program is largely going to invest in electrification
  - Personal vehicles, medium and heavy duty fleets, transit, shared rides, under-resourced communities
- Call for projects closed in August – SACOG is now in the process of evaluating projects
  - Staff recommendations will be in November, and the Board will act in December

### Questions?

- How competitive was this application?
  - Very competitive
- What about the extra money? SACOG won't be spending all the money the board allocated.
  - SACOG is going to offer another program in 2020
- First round was tight timeline – will the second round be that tight?

- No, we recognize it was a short timeline with other competing grants (busy summer!) – we will work to adjust it next cycle
- How will these be graded? Application was a little confusing and did not provide much room for descriptions.
  - The projects will be graded based on what was submitted in the application

## Capital Region UHI Project

---

**Shelley Jiang** | Climate change coordinator, Sacramento Air Quality Management District

### The why?

- This is an SB-1 funded urban heat island reduction project for the Capital Region
- Rising heat in Sacramento. Historically, Sacramento averages 12 days over 100° each summer.
  - By 2050:
    - Low emissions scenario: 34 days over 100°
    - High emission scenario: 40 days over 100°
  - By 2085-2099:
    - Low emissions scenario: 46 over 100°
    - High emission scenario: 72 over 100°
- Public health and heat
  - Sacramento County experiences heat-related death and emergency room visits that are excess of the states average
- CalEPA's 2015 UHI study
  - This study revealed Sacramento doesn't experience a classic heat island effect. Sacramento has a heat island that is pushed to the north and east due to delta breeze and atmospheric currents - this creates issues on a regional scale

### The project

- Solution: cool the capital region
- This new project will expand on the 2015 study to include the whole region, and will result in a comprehensive Heat Pollution Reduction Plan, with specific recommendations for integrating heat-mitigation strategies into transportation plans, projects, guidelines, and codes. Some of these strategies could include urban tree canopy, cool roofs, EVs, solar panels, etc).
  - The project will determine how effective these mitigation / adaptation strategies are. The strategies will then be combined with a database of projects in the region to find opportunities to incorporate these solutions, and to take into account community input and engagement.
  - Timeline: May 2018-2020
- Project partners
  - The Urban heat island modeler is Altostratus, Inc. The modeler will build a UHI model for the six-county Sacramento region and look at current and future climate scenarios. Mitigation measures will also be discussed (uniform application, targeted priority areas, potential for combination with other measures)
  - The project is being managed by SMAQMD and LGC
- Opportunities and challenges
  - Strength: Existing regional partnerships and collaborations
  - Opportunity: engage with new partners and stakeholders

- Challenge / risk: engaging “the community”, buy-in from local agencies, translating plans to implementation

### Questions?

- How are health / parks going to be integrated into initial planning?
  - Model will not focus on health effect - it will be purely heat island. But hope to incorporate health perspective from the TAC.
    - Community engagement portion will also aid this
- Public outreach?
  - We need to work with youth – potential for them to be tree stewards. “You can’t just plant a tree and have it die”
    - The upcoming recycle water fill station at Regional SAN – No cost!
    - By 2023, we will have Echo water treatment plant finished - 130 million gallons on recycled water that will be available
- Good examples of tree ordinances for parking lots? Ordinances are ignored, there’s no follow up (assuming good implementation). We need to address this on a regional scale
  - The economic incentive to plant trees in parking lots is strong

## Integrating Adaptation into General Plans

---

**Erik de Kok** | Senior Project Manager, Ascent Environmental

### Regulatory background

- SB 379: Climate vulnerability assessment and adaptation strategies now required in Safety Element of General Plan Updates
  - Safety element and hazard mitigation must be aligned and must address climate vulnerability. Sacramento county addressed this last year and updated their safety element
- Basic steps
  - Conduct a climate change vulnerability assessment
  - Define adaptation and resilience goals, policies, and objectives based on findings of vulnerability assessment
  - Identify implementation measures to achieve these goals and objectives

### Climate Adaptation Planning Process

- Vulnerability (exposure)
  - Exposure – what climate change effects will a community experience?
  - Sensitive – what aspects of a community (people, structures, and functions) will be affected?
  - Potential impacts – how will climate change affect the points of sensitivity?
  - Adaptive capacity – what is currently being done to address the impacts?
  - Risk and onset – how likely are the impacts and how quickly will they occur?
- Community and impacts (infrastructure, economic aspects of the community)
  - Prioritize adaptive needs – what impacts require actions to address them?
  - Identify strategies - what strategies should be pursued to address adaptation needs?
  - Evaluate and prioritize - which strategies should be implemented first?
  - Phase and implement – how can the strategies be funded, staffed, and monitored?

## General Plans Integration Approaches

- Vulnerability assessment
  - Vulnerability could be the first part of the general plan update process (technical background, etc) to inform policy and impact analysis
  - Key issues and findings
  - Findings document (vulnerability assessment can feed into this)
  - Vulnerability could be the first part of the general plan update process (technical background, etc) to inform policy and impact analysis
- Adaptation goals, policies, and programs – these can be fed into policy document
- Climate change is a raw topic - have to do safety element, but why not look at other elements (infrastructure, land use) - there is a way to get adaptation into the general plans
  - Statute says it's okay to incorporate another plan by reference in safety limit - as long as you meet the criteria by law

## Resources

- [California Adaptation Planning Guide \(2012\)](#)
- [General Plan Guidelines \(2017\)](#)
- [CA Fourth Climate Assessment](#)
  - [Sacramento Valley Regional Report](#)
- [Cal-Adapt](#)
- [CA Adaptation Clearinghouse](#)

## Regional and Local Plans and Resources

- [SACOG Transportation Climate Adaptation Plan](#)
- [Local Government Climate Action Plans](#)
  - [Sacramento County Climate Vulnerability Assessment](#)
- [Capital Region Climate Readiness Collaborative \(CRC\)](#)

## Financing and Funding Opportunities

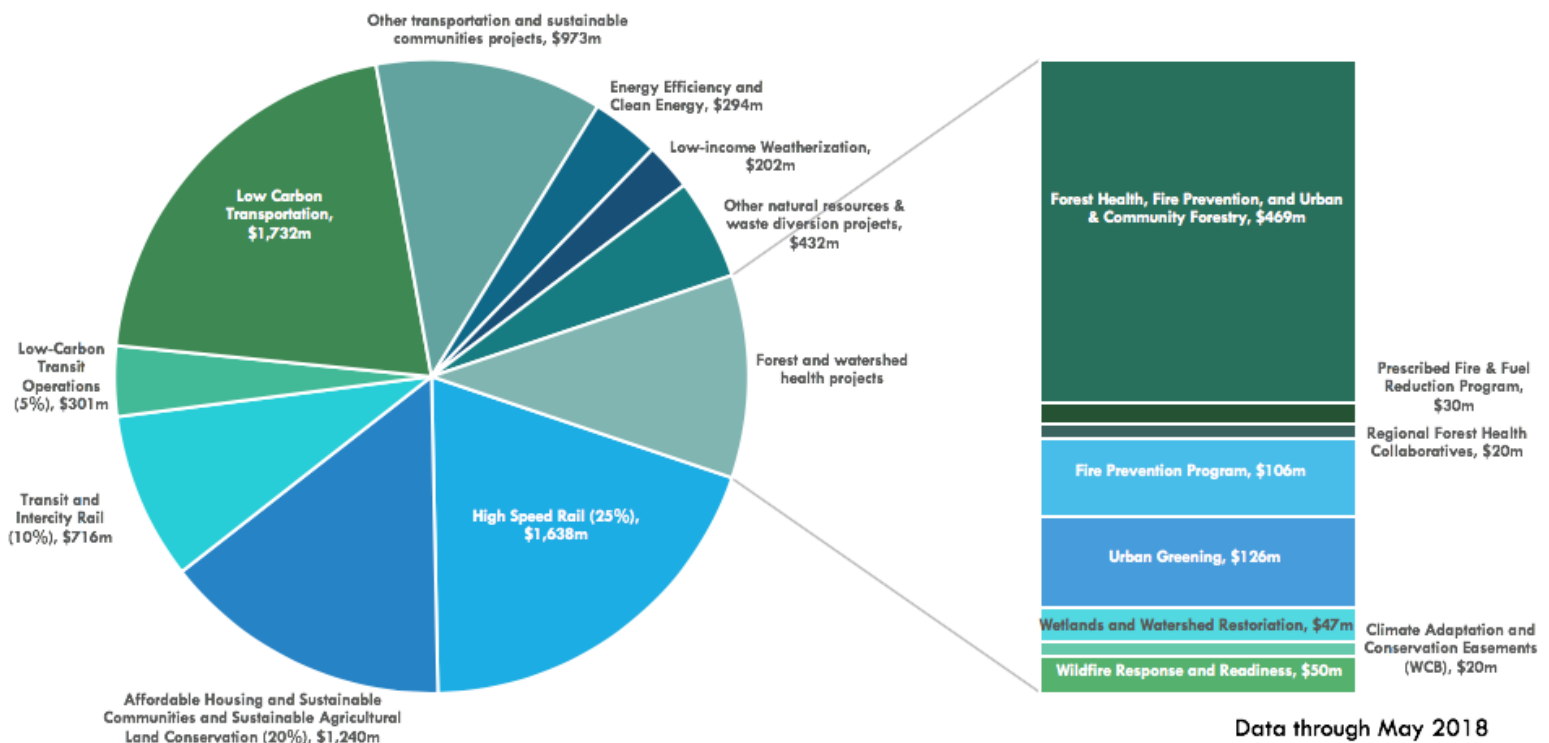
---

**Shelley Jiang** | Climate Change Coordinator, Sacramento Air Quality Management District

### California Climate Investments

- California Climate Investments (CCI) invests cap-and-trade proceeds to projects to help reduce GHGs, strengthen the economy, improve public health and the environment, with a focus on under-resourced communities
  - Cap and trade funds: companies buy the right to emit GHG emissions in CA. CCI are those funds
- State of CA has set criteria for these investments
  - 25% to under-resourced communities
  - 5% to low communities and households
  - 5% to low income communities next to DAC.
- New update to CCI: individual projects no longer need to achieve GHG reductions (open to more planning and adaptation projects)

# CALIFORNIA CLIMATE INVESTMENTS TO DATE



- CCI in the Capital Region: to date, the Capital region has received \$92 million in CCI funding, reducing 1.7 million tons of GHG emissions (thus far)
  - Of this, \$59 million benefits disadvantaged and low-income communities
  - The capital region is 6.3% of the state population, but only received 1.5% of total CCI funding!
- Project examples in capital region
  - Delta Wetlands: \$10 million to restore and/or build 1,700 acres of Delta wetlands at Sherman Island, with additional benefits for water quality, levee stability, and biodiversity
  - Transit:
    - \$6.7 million for affordable, transit-connected housing in West Sacramento – West Gateway Place
    - \$6.4 million: refurbishing Regional Transit light rail vehicles to increase service frequencies
    - \$1.4 million for all-electric car share program for affordable housing communities
  - Trees: \$1 million for the Sacramento Tree Foundation’s community-led tree planting in South Sacramento, as well as \$0.5 million for urban wood rescue.
- Future funding
  - Find funding: <https://fundingwizard.arb.ca.gov/>
  - Calendar of events, workshops, and deadlines: <https://www.arb.ca.gov/ccievents/>

- New programs:
  - [TCC](#) due 10/30
  - [Affordable housing and sustainable communities round 4](#)
  - Regional forest health collaboratives (CNRA) – \$20 million
  - Prescribed fire and fuel reduction program - \$30 million
  - Wildfire response and readiness (CalOES) - \$25 million

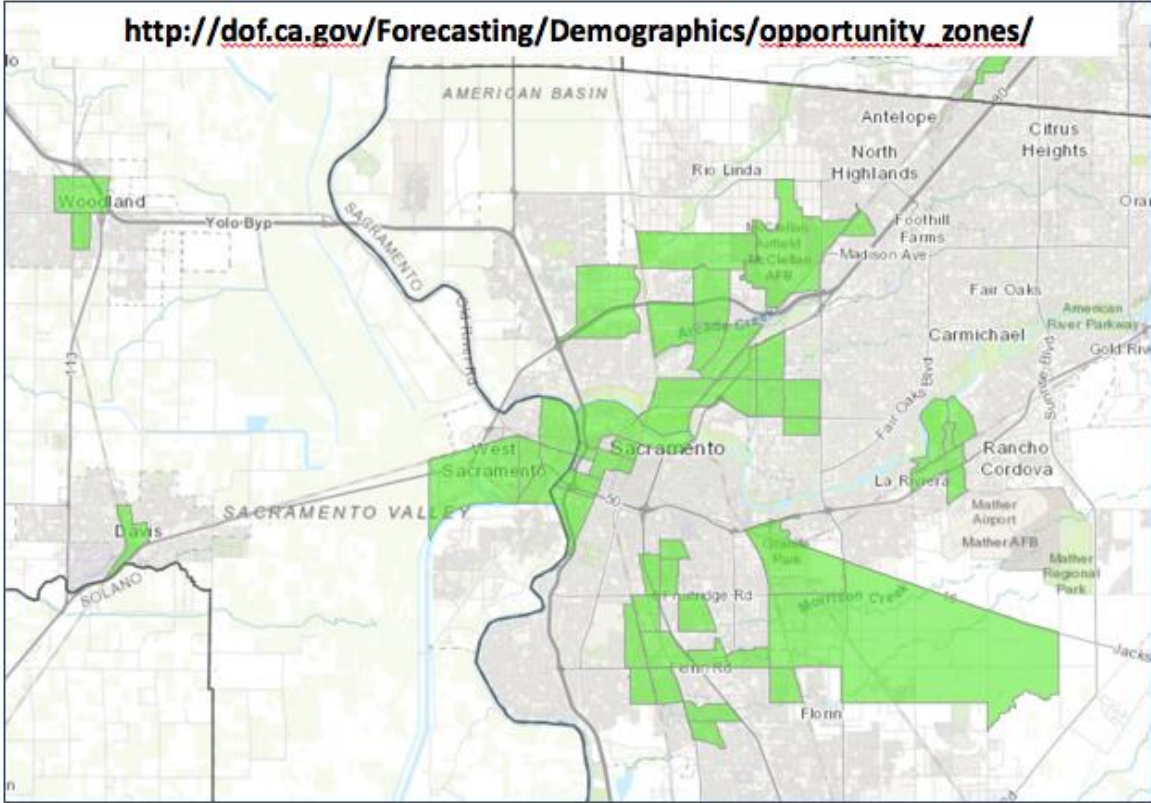
**Meg Arnold** | Managing Director, Valley Vision

### **Opportunity Zones**

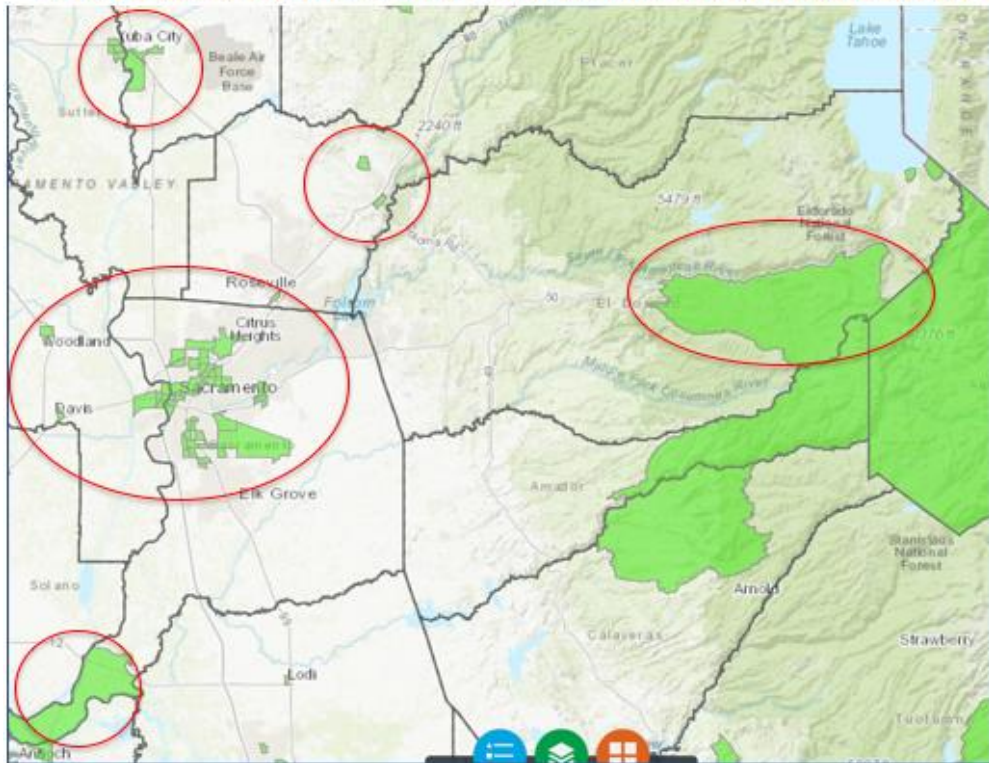
- What are opportunity zones?
  - Opportunity zones are a new asset class in investment markets created in 2018 tax reform act
  - Opportunity zones are not intended to focus on climate or environmental issues - How do opportunity zones and the investment funds impact our region?
- What do they do?
  - Make it possible for investors to shelter gains if the gains are put into an opportunity zone fund. These funds are required to invest 90+% into census tracts that have been identified as opportunity zones
    - High proportion of census tracts overlap with cal-enviro screen top 25% under-resourced communities.
- Public benefit from private money?
  - These investments reward patient capital - the longer you hold your opportunity zone investment, the greater the gains you will receive. Because opportunity zones were created through tax reform act, it doesn't have any "guardrails" - there are no requirements for transparency, community engagement, anti-displacement (actions on the part of the investors)!
  - Risk is real - promise of opportunity zones could turn into something that is disadvantageous to these communities that the program is intended to support. There are a number of groups working to build guardrails around the program
- Capital Region Opportunity Zones



[http://dof.ca.gov/Forecasting/Demographics/opportunity\\_zones/](http://dof.ca.gov/Forecasting/Demographics/opportunity_zones/)



[http://dof.ca.gov/Forecasting/Demographics/opportunity\\_zones/](http://dof.ca.gov/Forecasting/Demographics/opportunity_zones/)



Who is going to do this? How? Who is going to do this? How? What degree of transparency and community interaction? These questions are still being answered.



## Questions?

- Who will be managing these funds?
  - Anyone! Proponents have touted it as “it moves at the speed of the market”
- What is a good host environment? Local governments? Private sector? Business council?
  - It could be anyone - it ought to be an entity that can move with some speed - there is a compression of time that pertains to opportunity zones

**Julia Kim** | Senior Project Manager, Local Government Commission

## Adaptation Grant Program Opportunities

- CCI – program types
  - Sustainable communities and clean transportation
    - \$6.6 B appropriated
    - Five agencies
  - Energy efficiency and clean energy
    - \$496 M appropriated
    - Five agencies
  - Natural resources and waste diversion
    - \$1.3 billion appropriated
    - Eleven agencies
- Current programs
  - Low-Income Weatherization Program
  - Urban & Community Forestry Program; Urban Greening Program
  - Forest Health Program & Fire Prevention Grant Program
  - Climate Ready Program
  - Climate Adaptation & Resiliency Program
- Developing programs
  - CNRA – Regional Forest Health Collaboratives: \$20M
  - CAL FIRE – Prescribed Fire & Fuel Reduction Program: \$30M
  - CalOES – Wildfire Response and Readiness: \$25M
- Transformative Climate Communities (TCC)
  - Place-based approach to integrate climate strategies
- California Resilience Challenge – trying to raise \$10 million dollars for climate resilience projects throughout CA. RFP will be released in early 2019